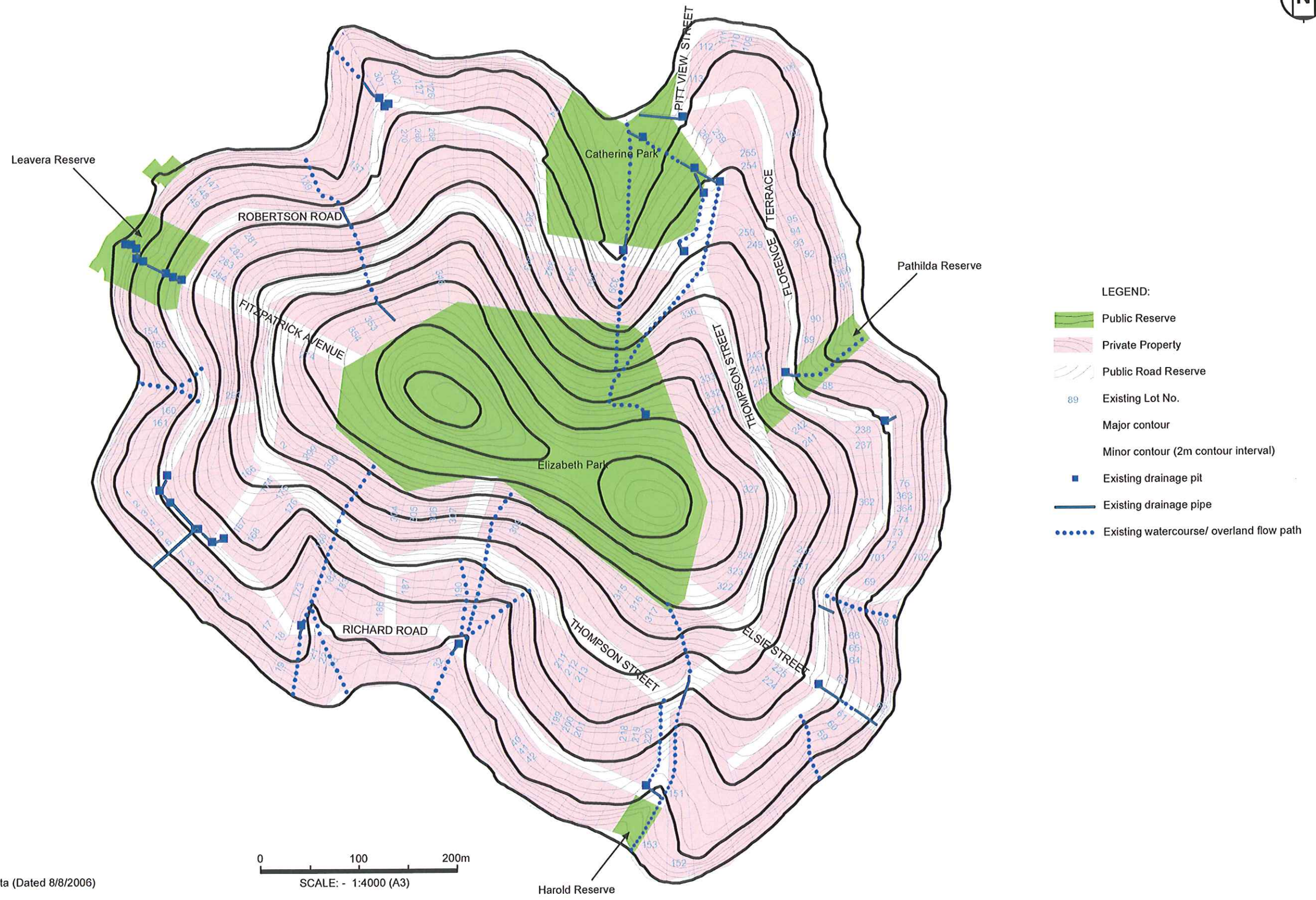
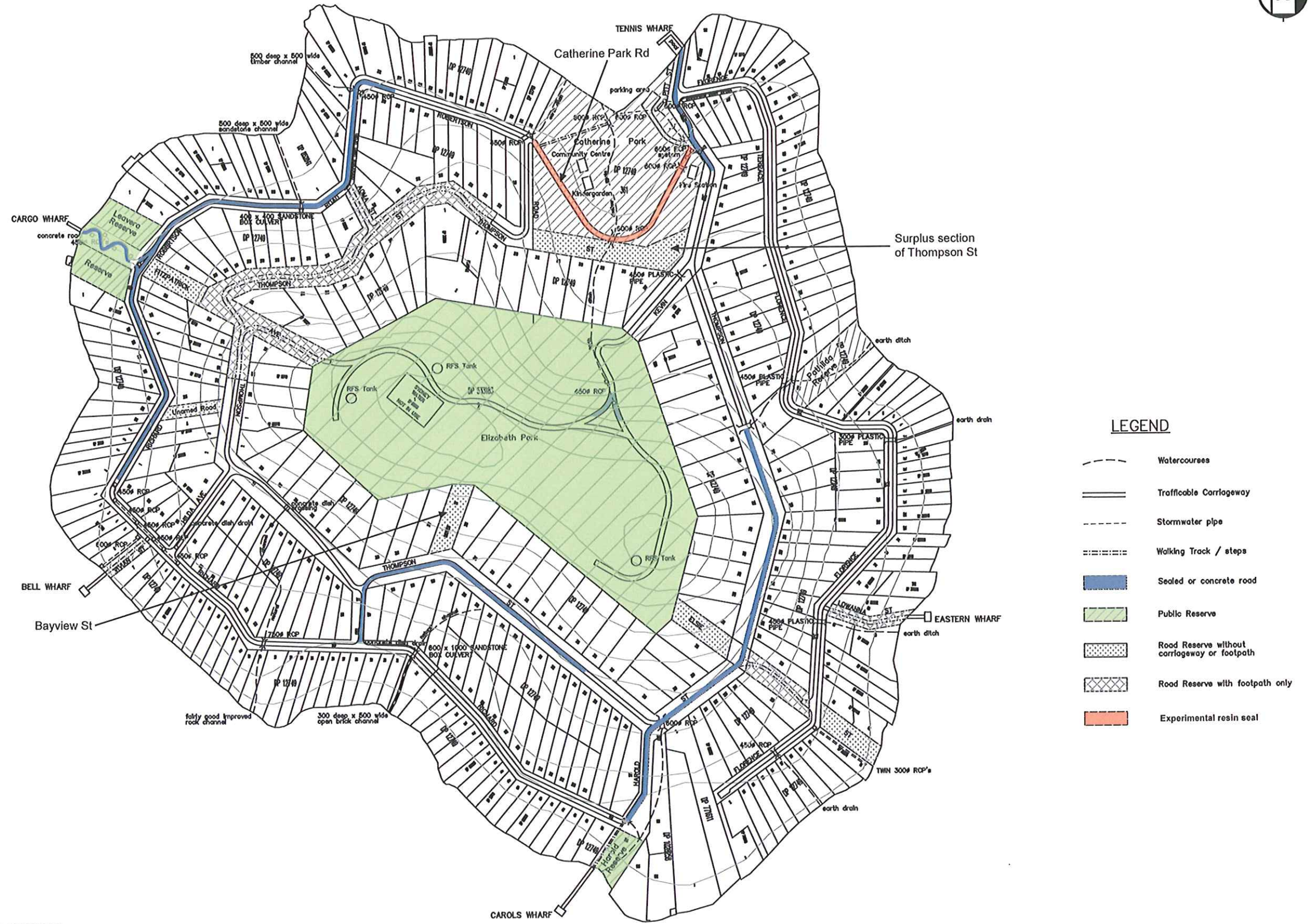


FIGURE 1



DATA SOURCE: Pittwater Council MapInfo Data (Dated 8/8/2006)

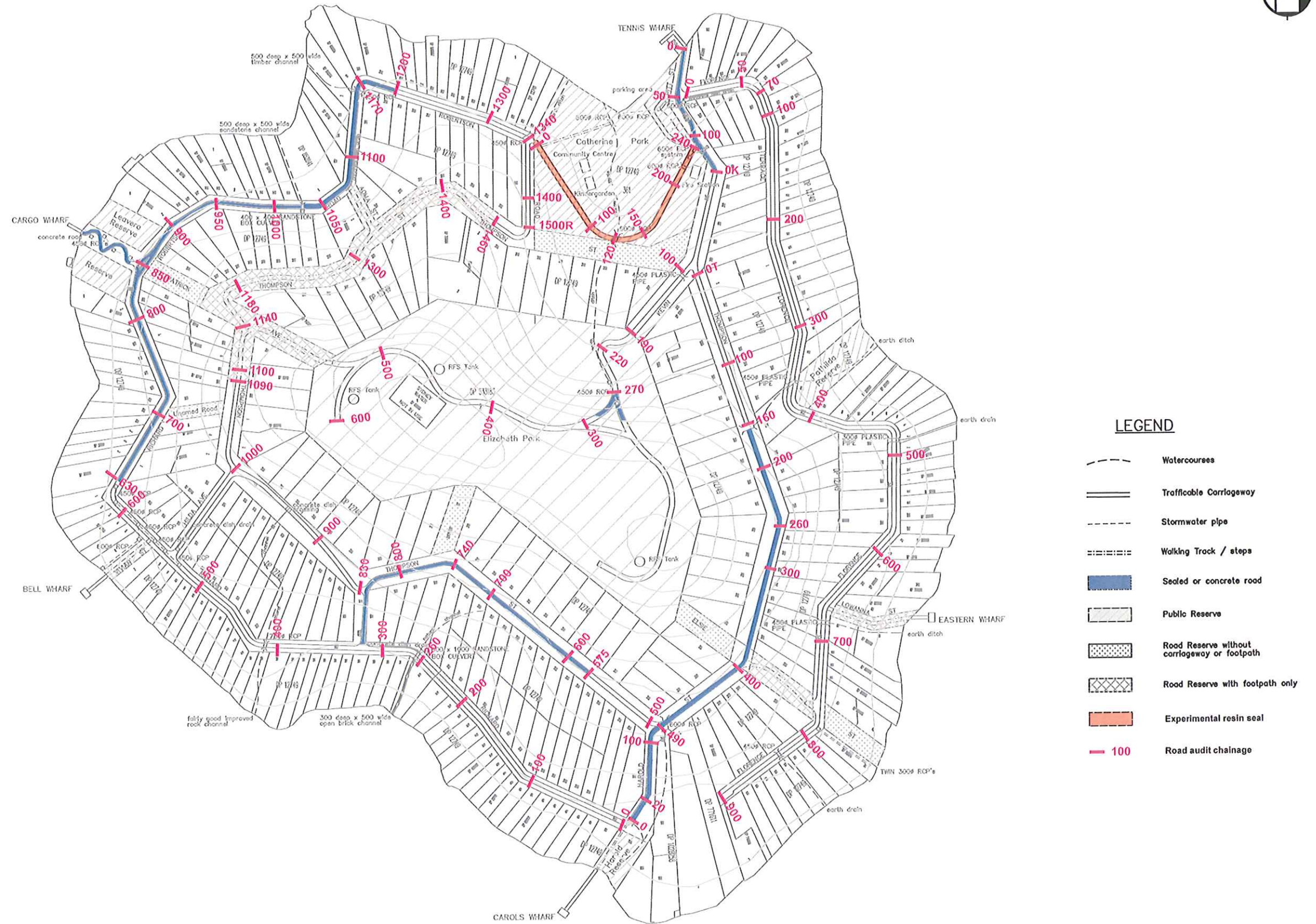
FIGURE 2



DATA SOURCE: Pittwater Council scotlandisland.dwg(Dated 16/8/2006)

0 100 200m
SCALE: - 1:4000 (A3)

FIGURE 3



DATA SOURCE: Pittwater Council scotlandisland.dwg(Dated 16/8/2006)

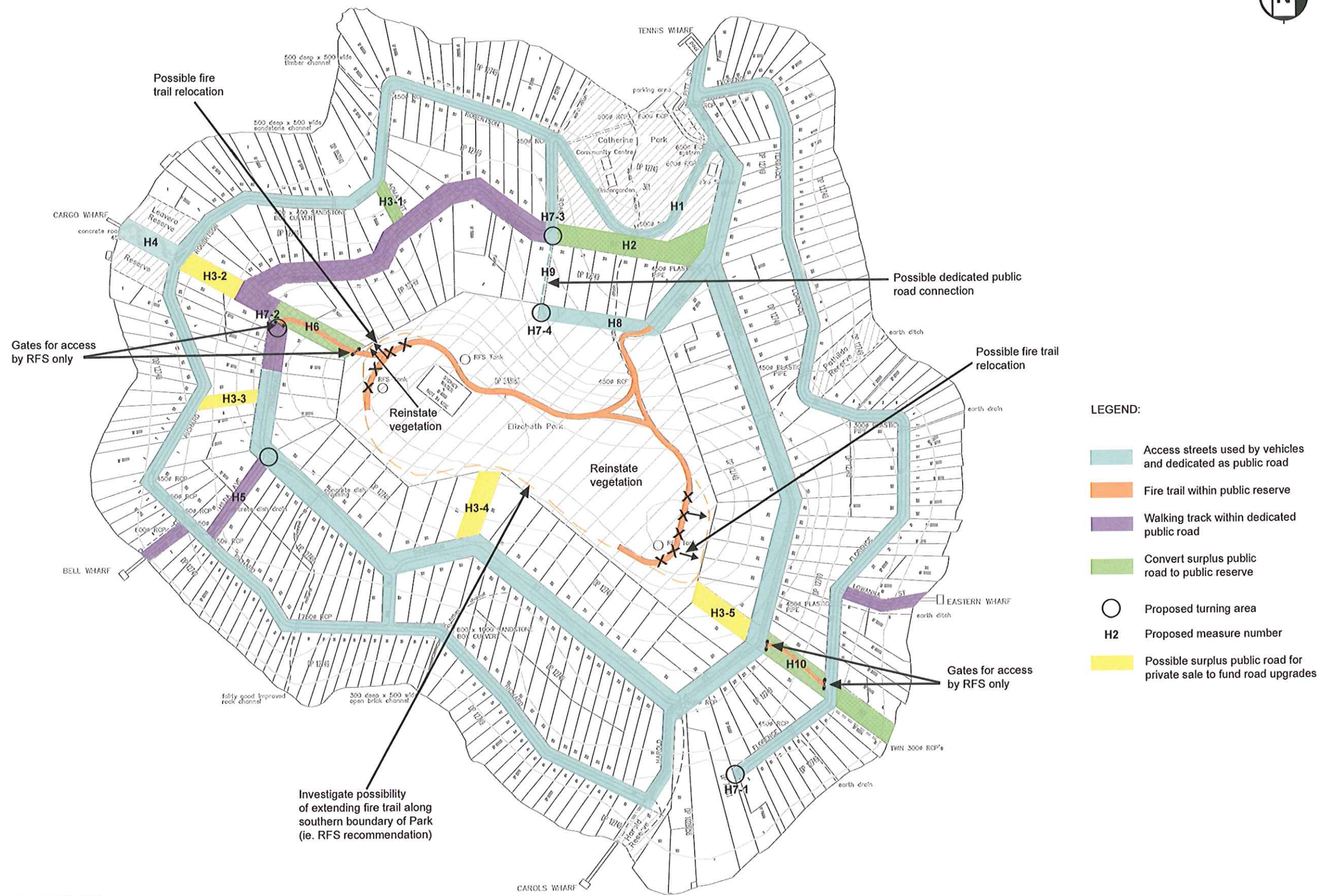
FIGURE 4



DATA SOURCE: Pittwater Council scotlandisland.dwg(Dated 16/8/2006)

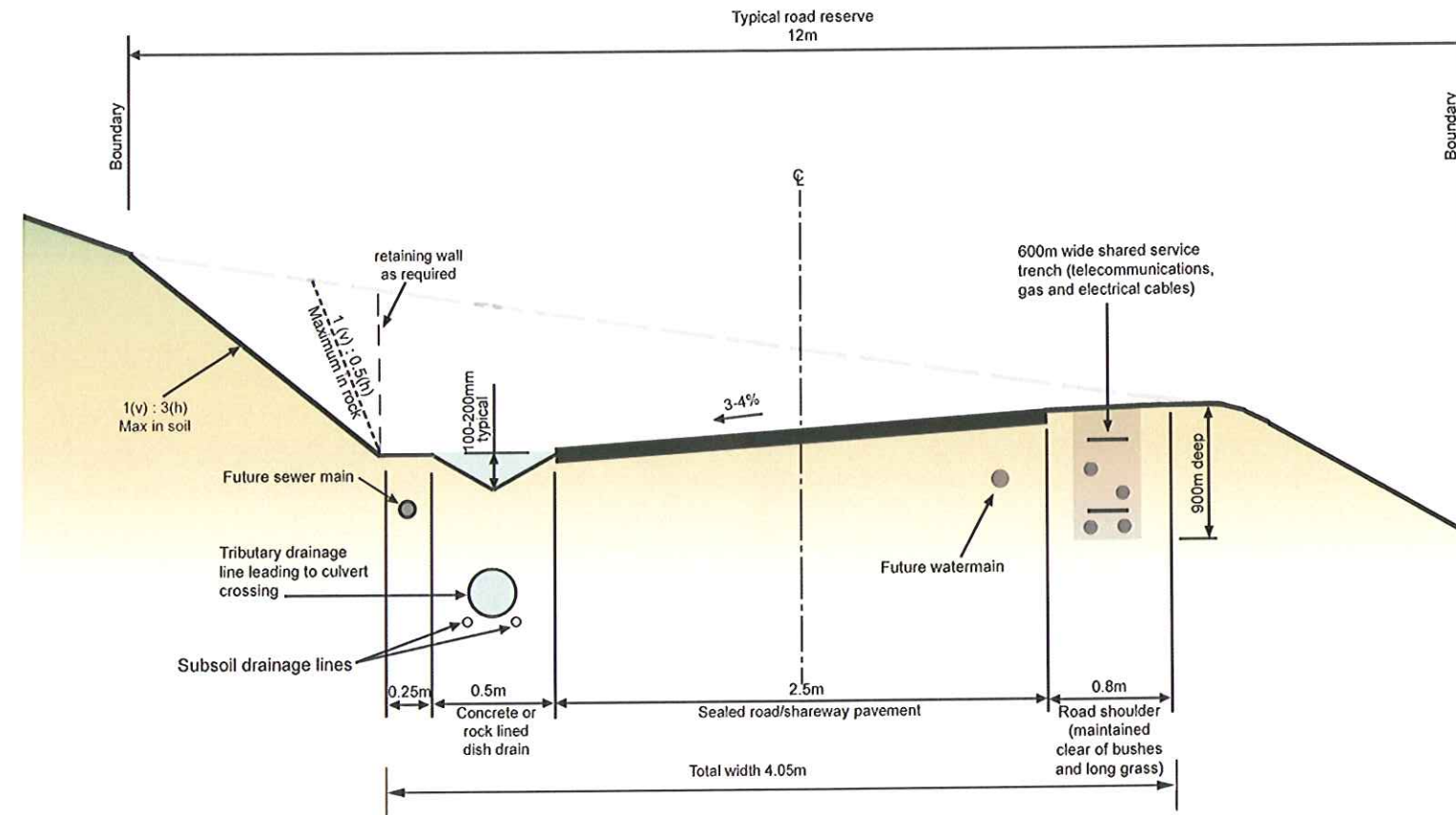
0 100 200m
SCALE: - 1:4000 (A3)

FIGURE 5



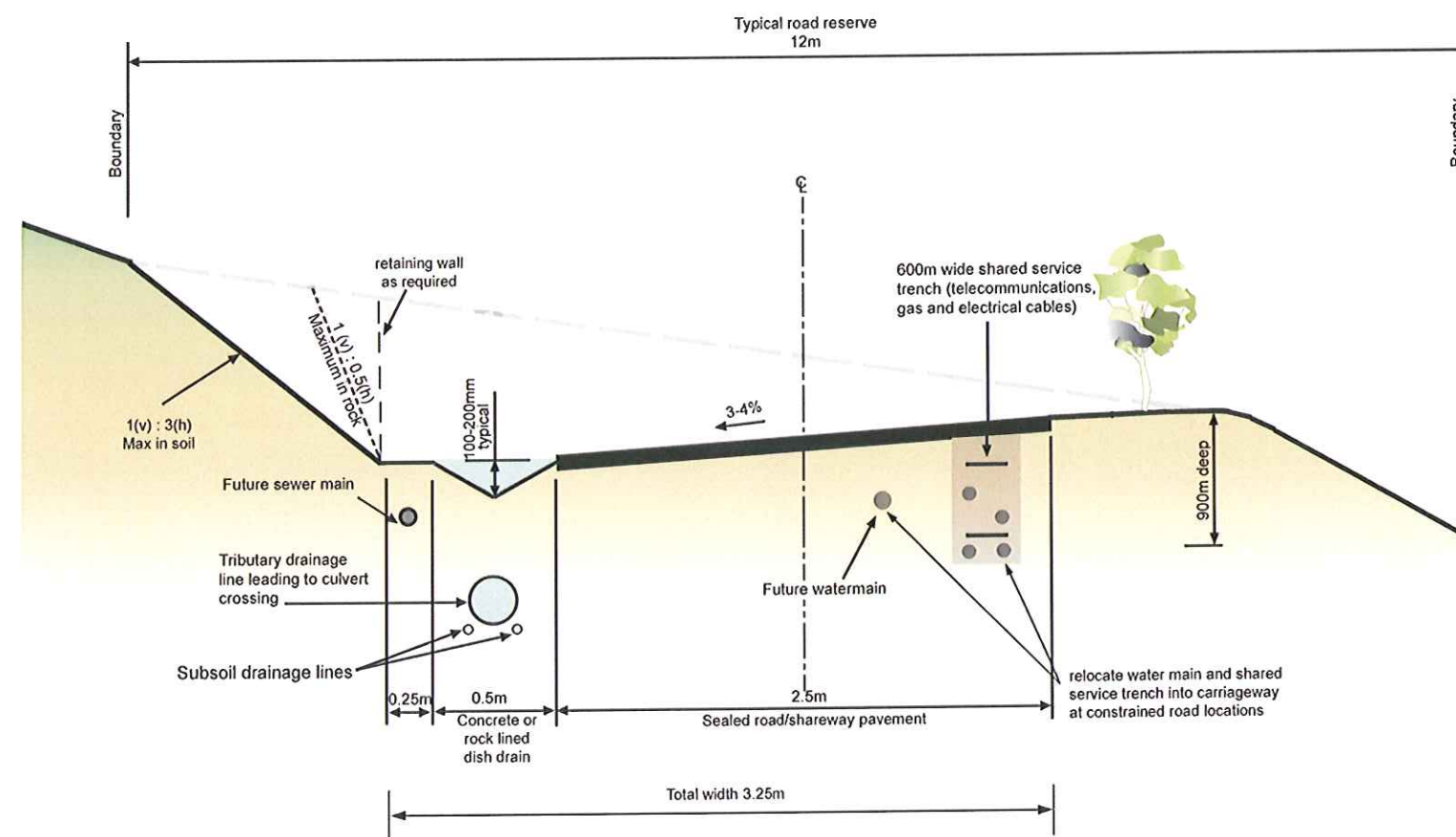
DATA SOURCE: Pittwater Council scotlandisland.dwg(Dated 16/8/2006)

FIGURE 6



TYPICAL SHAREWAY CROSS SECTION

(Not to scale)



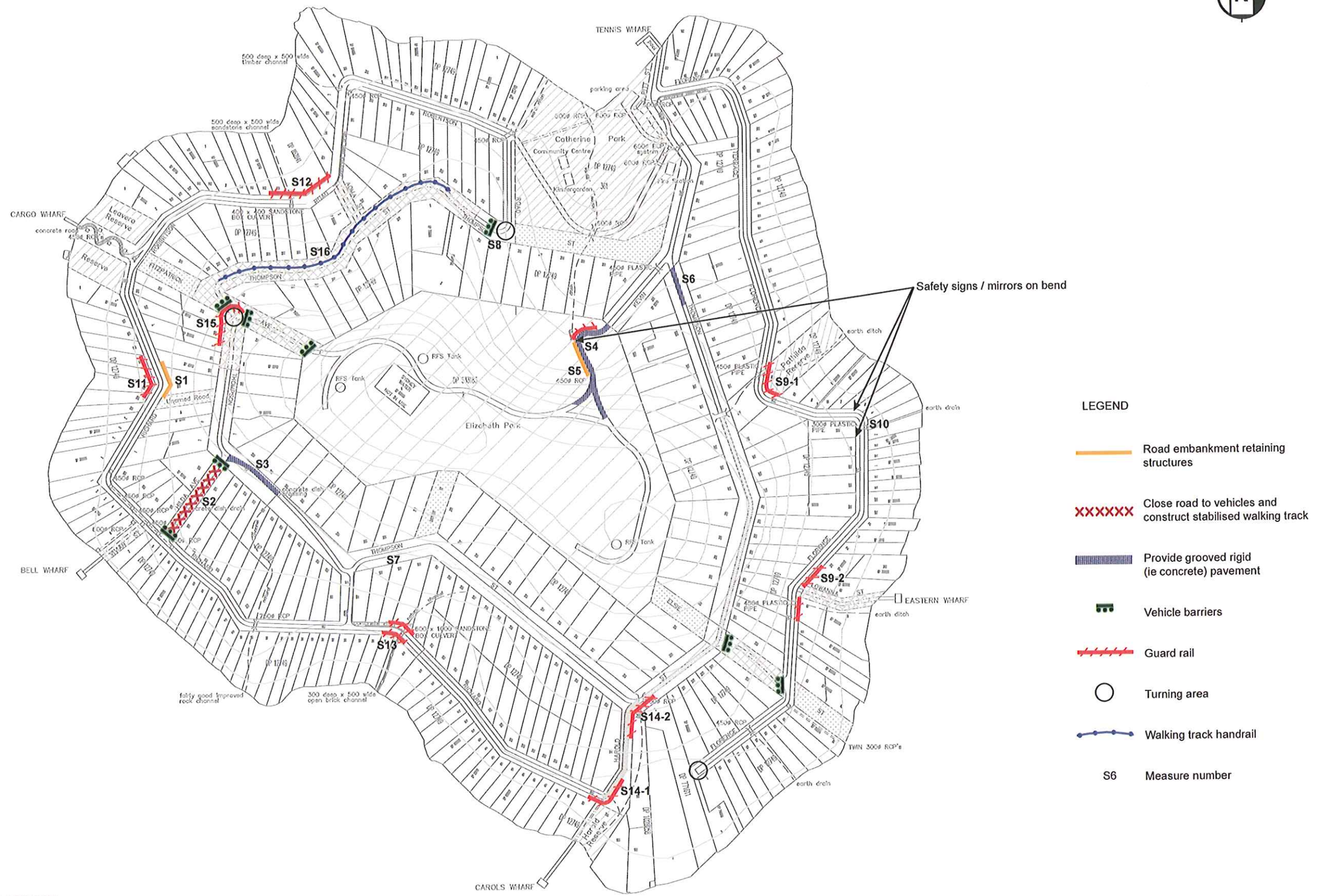
CONSTRAINED ROAD / SHAREWAY CROSS SECTION

(Not to scale)

NOTES:

1. Passing bays shall be provided generally at intervals of 200m but not exceeding 400m. The total trafficable width at passing bays shall not be less than 7m.
2. The maximum longitudinal gradient of unsealed roads shall be 16%. The maximum longitudinal gradient of all roads shall be 25%.

FIGURE 7



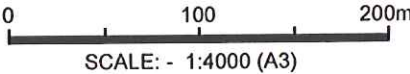
DATA SOURCE: Pittwater Council scotlandisland.dwg(Dated 16/8/2006)

FIGURE 8



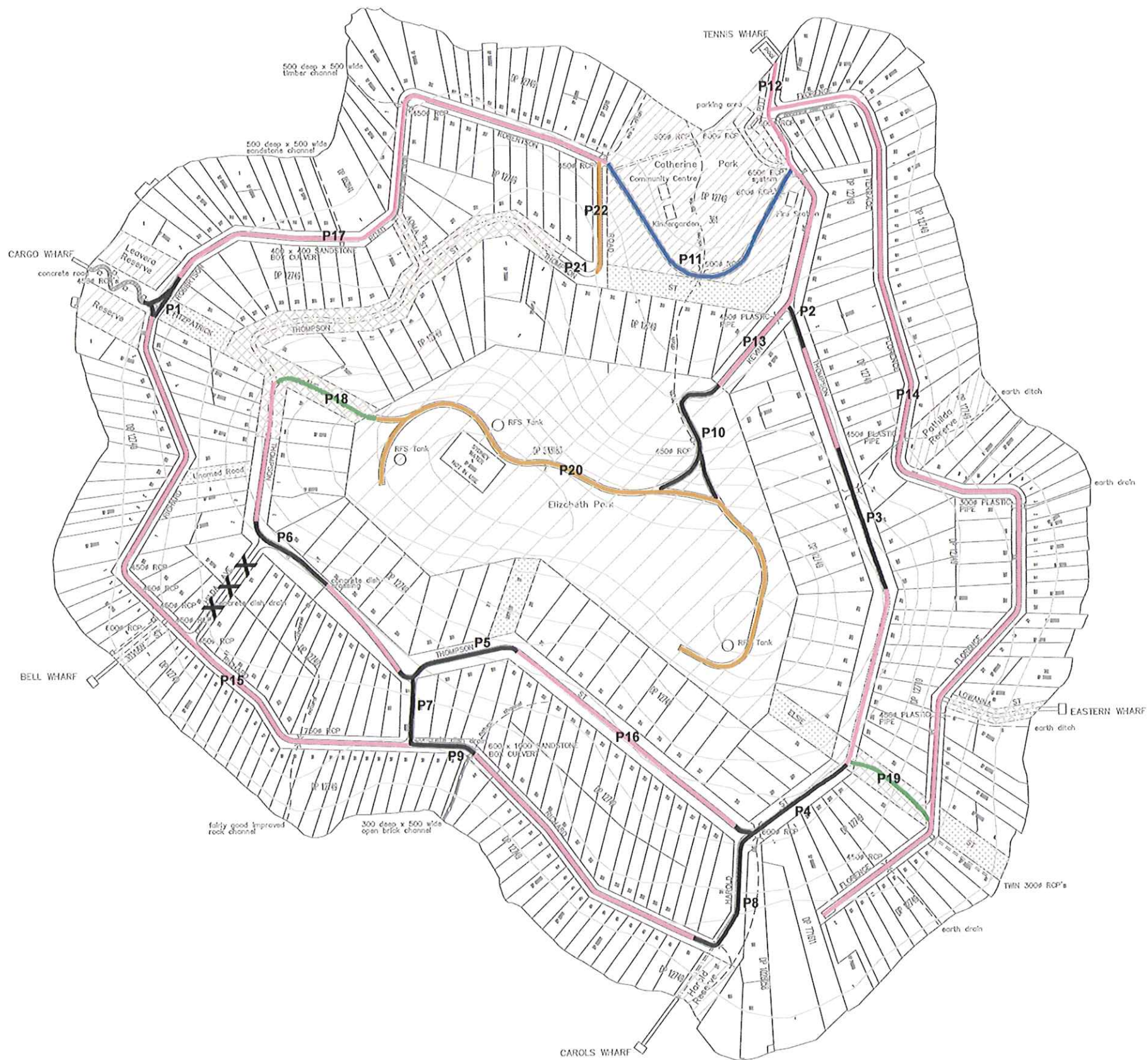
- LEGEND**
- New earth crossbanks
 - New steps (approx. location only)
 - Stabilised emergency firefighting track (refer to Diagram 3)
 - General walking track rehabilitation
 - New walking track and associated drainage
 - Monitor and upgrade repair walking tracks/stairs as required
 - W2 Proposed measure number
 - X X Close road to vehicles

DATA SOURCE: Pittwater Council scotlandisland.dwg(Dated 16/8/2006)



**SCOTLAND ISLAND ROAD RESERVE MASTERPLAN -
PROPOSED WALKING TRACK REHABILITATION MEASURES**

FIGURE 9



- LEGEND**
- Resin seal
 - Rigid pavement (ie. reinforced concrete) or equivalent alternative
 - Flush seal
 - Stabilised emergency firefighting track (refer to Diagram 3)
 - Typical fire trail treatment (ie. unsealed carriageway incorporating regular cross banks and stabilised dish drain)
 - P3 Proposed measure number
 - X X Close road to vehicles

DATA SOURCE: Pittwater Council scotlandisland.dwg(Dated 16/8/2006)

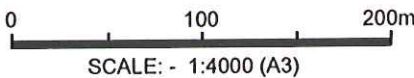
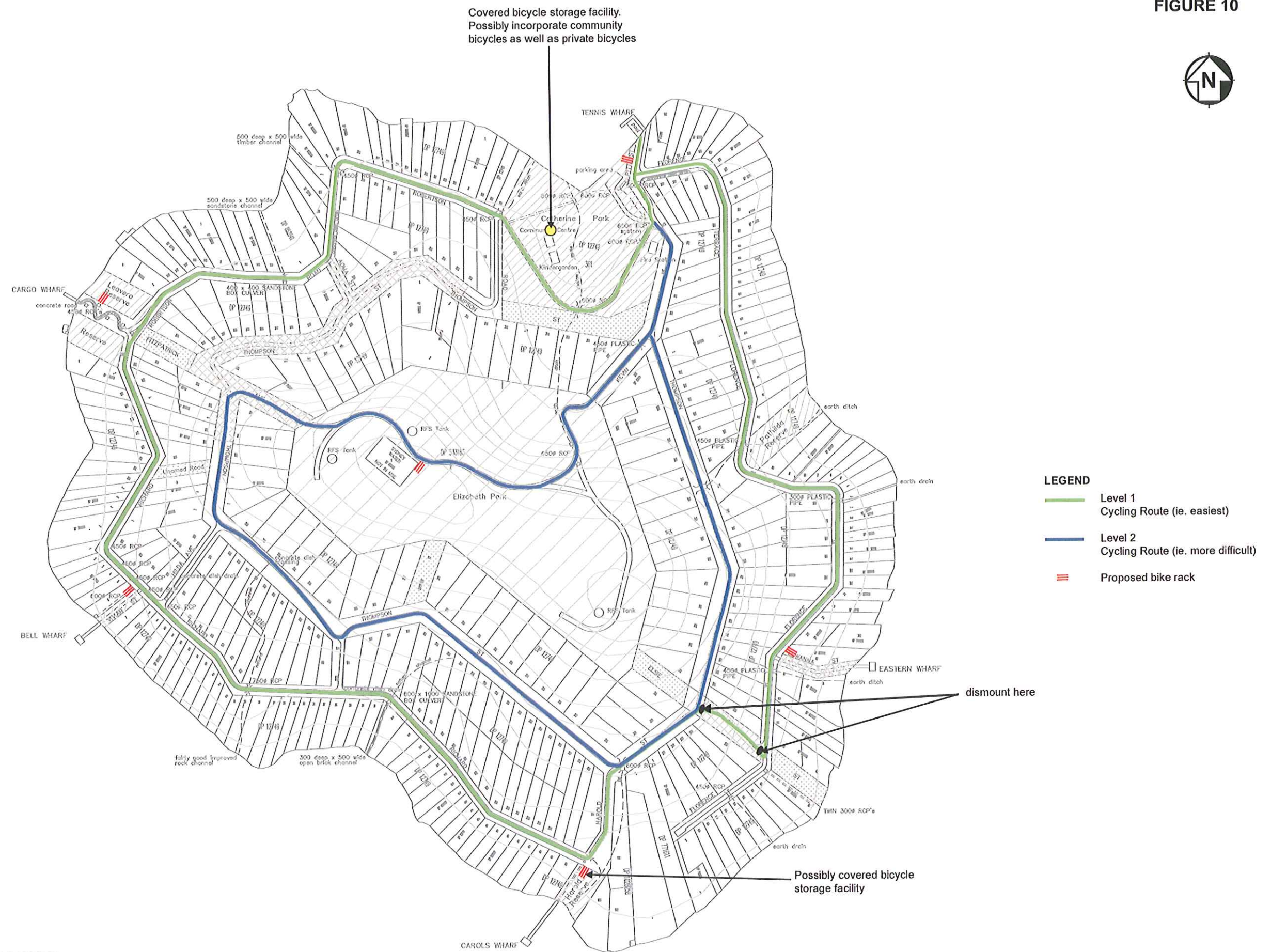


FIGURE 10



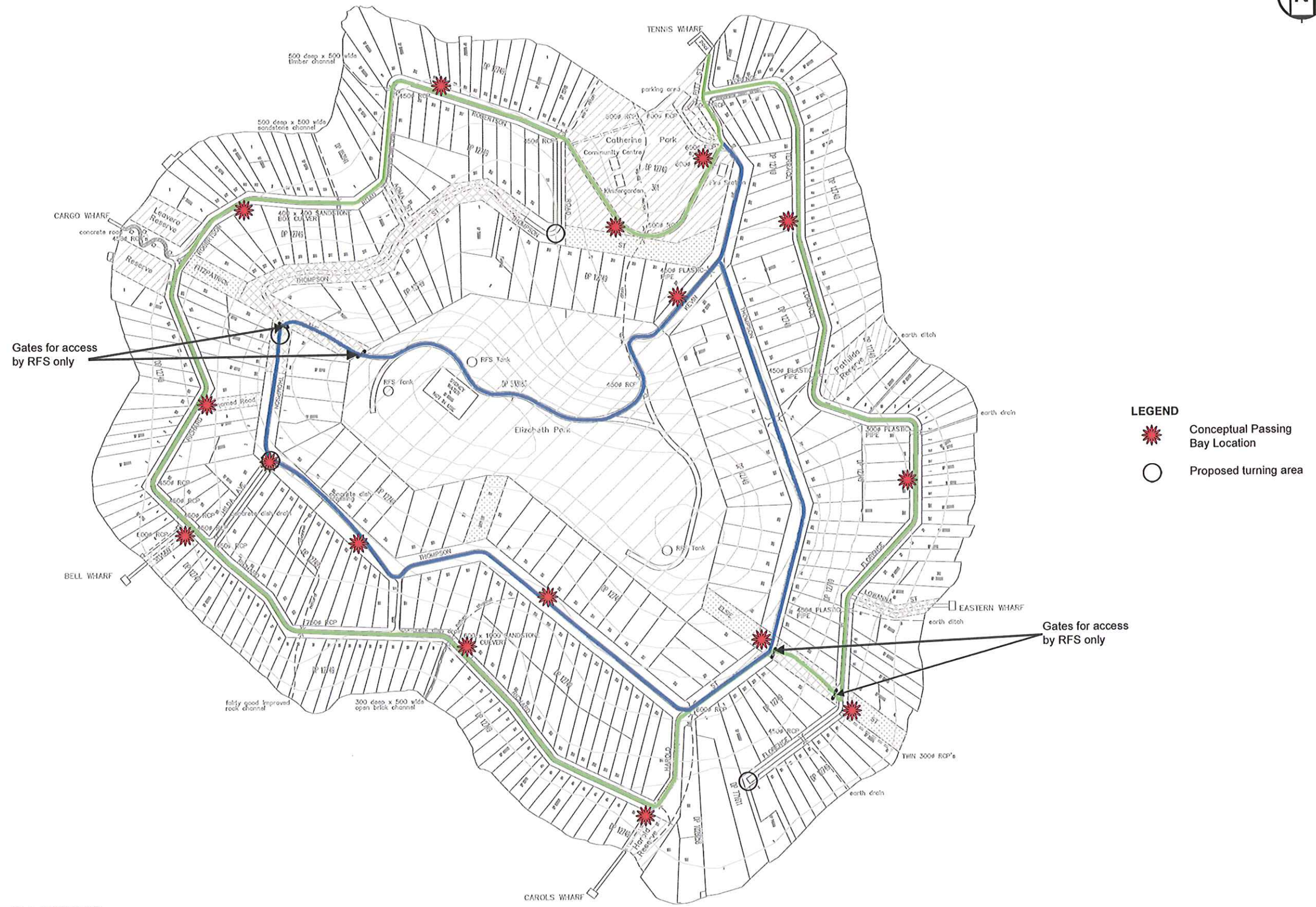
DATA SOURCE: Pittwater Council scotlandisland.dwg(Dated 16/8/2006)



J6617_01/FIG10_ProposedCyclingFacilities.jpg
Date: 8/9/2008

SCOTLAND ISLAND ROAD RESERVE MASTERPLAN - PROPOSED CYCLING FACILITIES

FIGURE 11

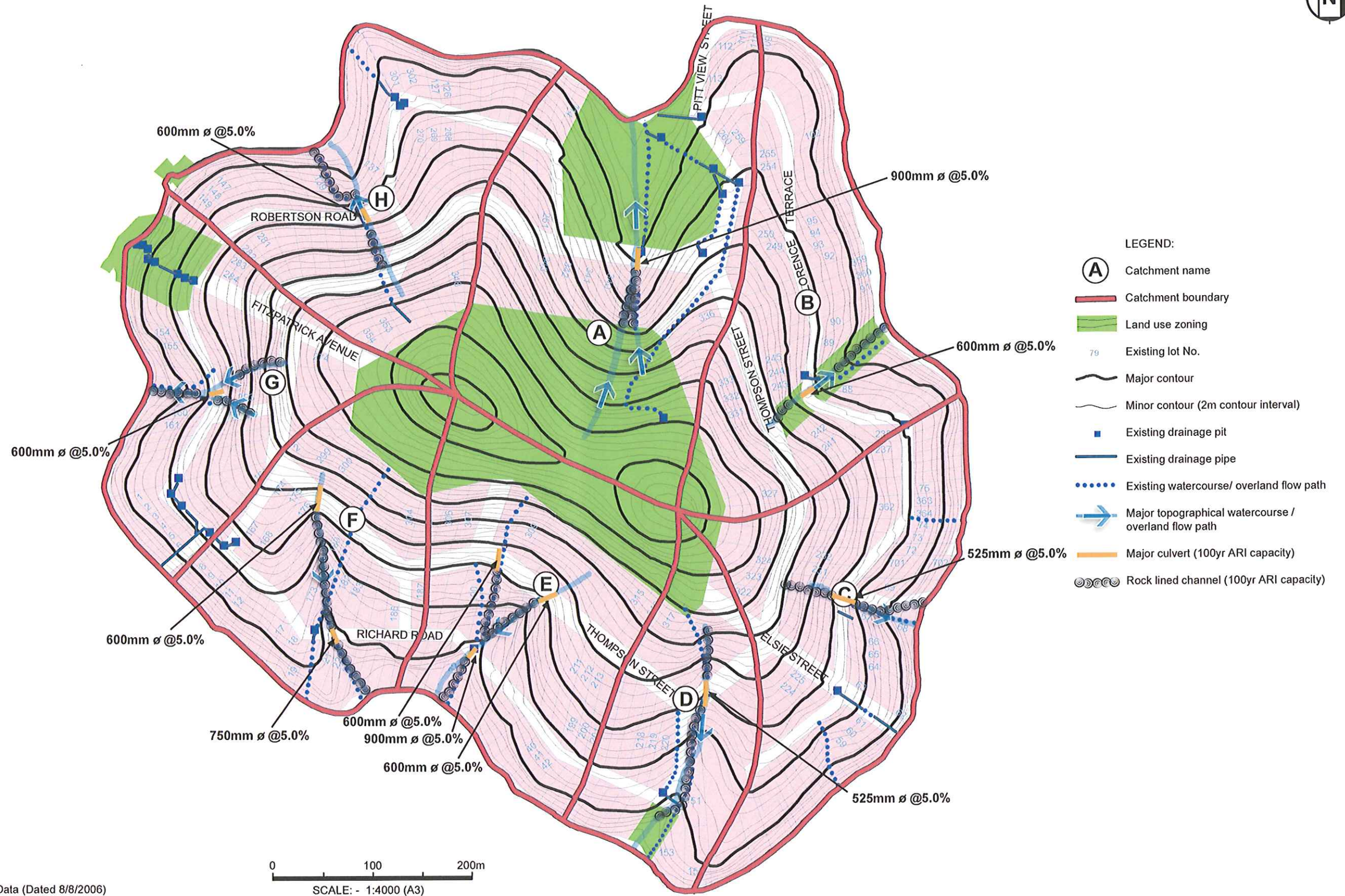


DATA SOURCE: Pittwater Council scotlandisland.dwg(Dated 16/8/2006)

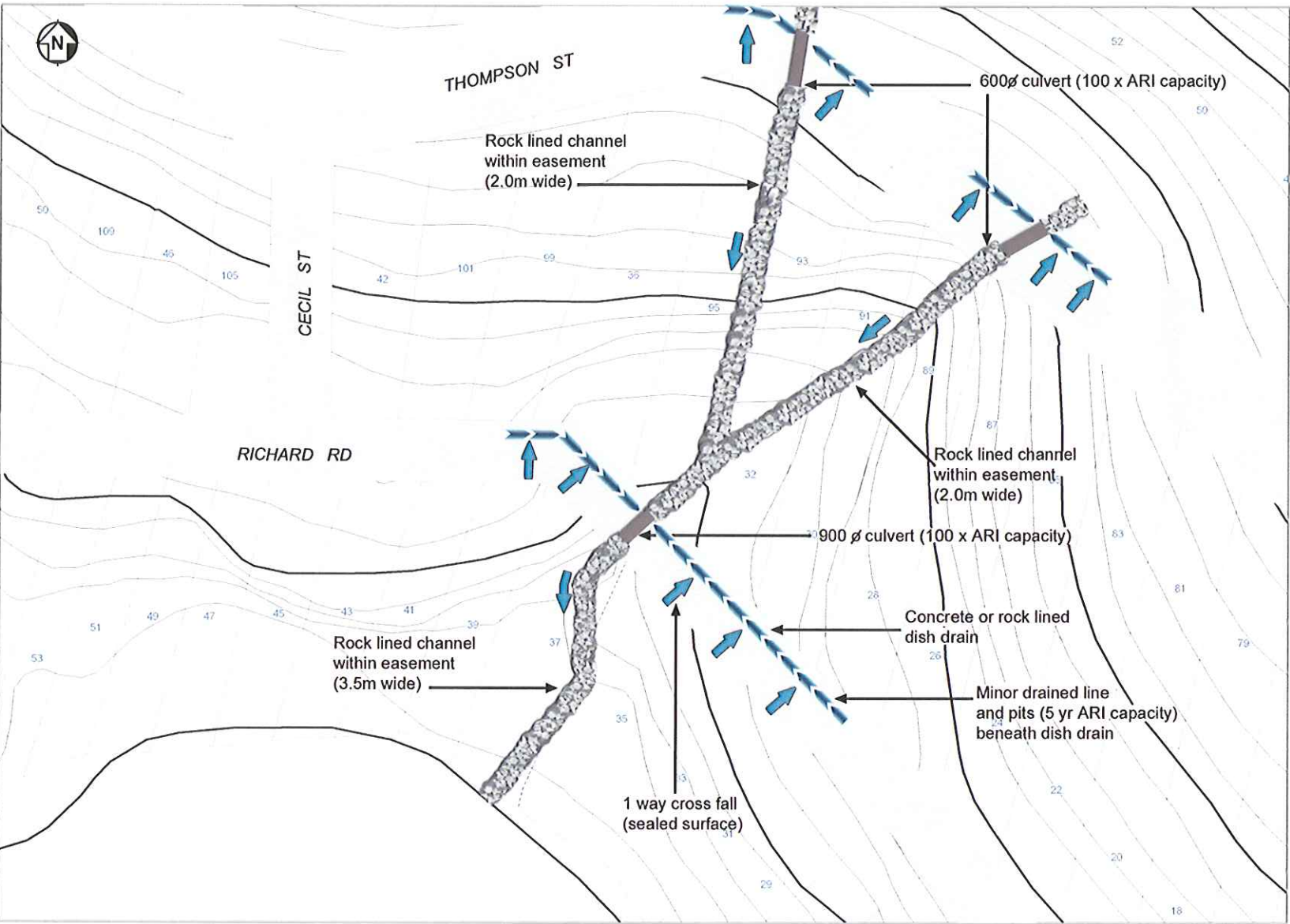


SCOTLAND ISLAND ROAD RESERVE MASTERPLAN -
CONCEPTUAL PASSING BAY LOCATIONS

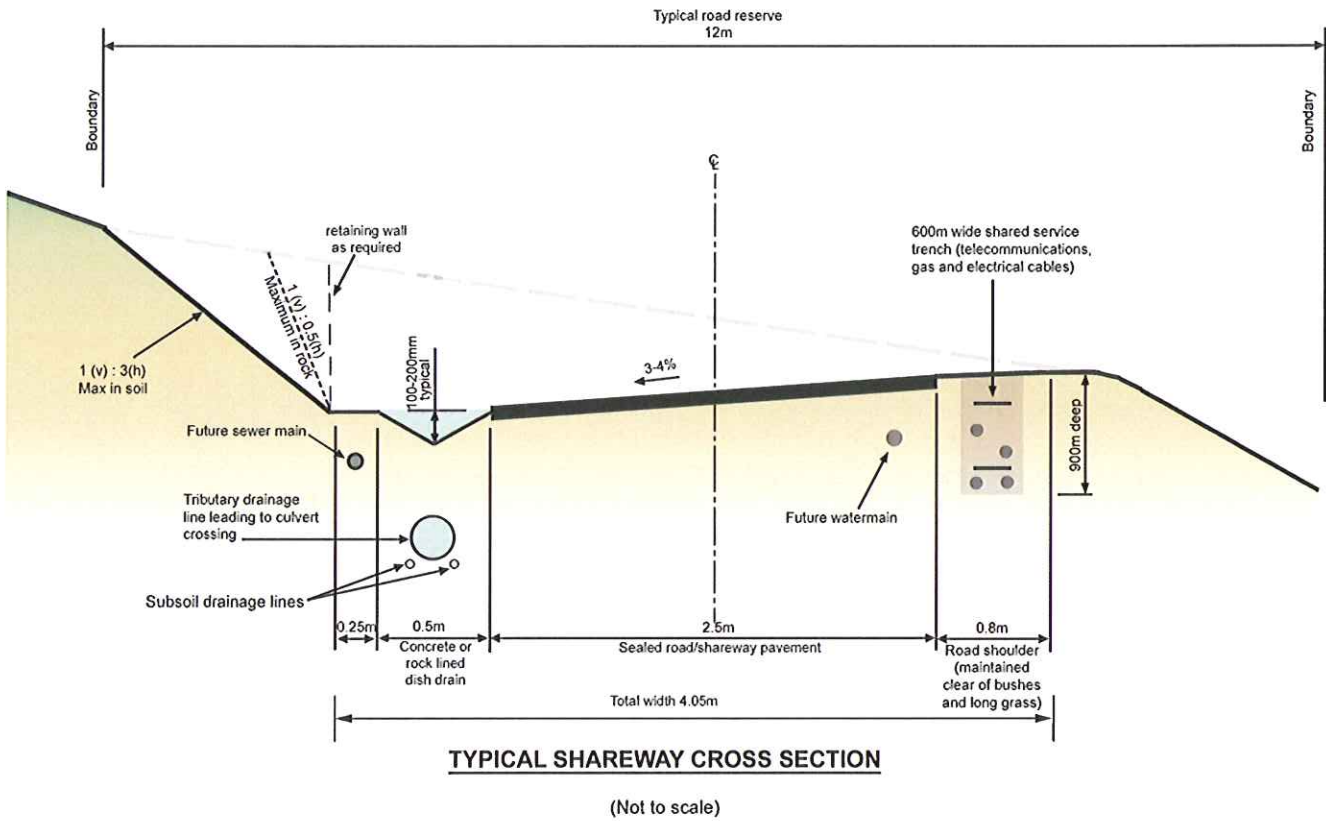
FIGURE 12



DATA SOURCE: Pittwater Council MapInfo Data (Dated 8/8/2006)



PLAN OF TYPICAL INTERSECTION DRAINAGE LAYOUT



NOTES:

1. Passing bays shall be provided generally at intervals of 200m but not exceeding 400m. The total trafficable width at passing bays shall not be less than 7m.
2. The maximum longitudinal gradient of unsealed roads shall be 16%.
The maximum longitudinal gradient of all roads shall be 25%.