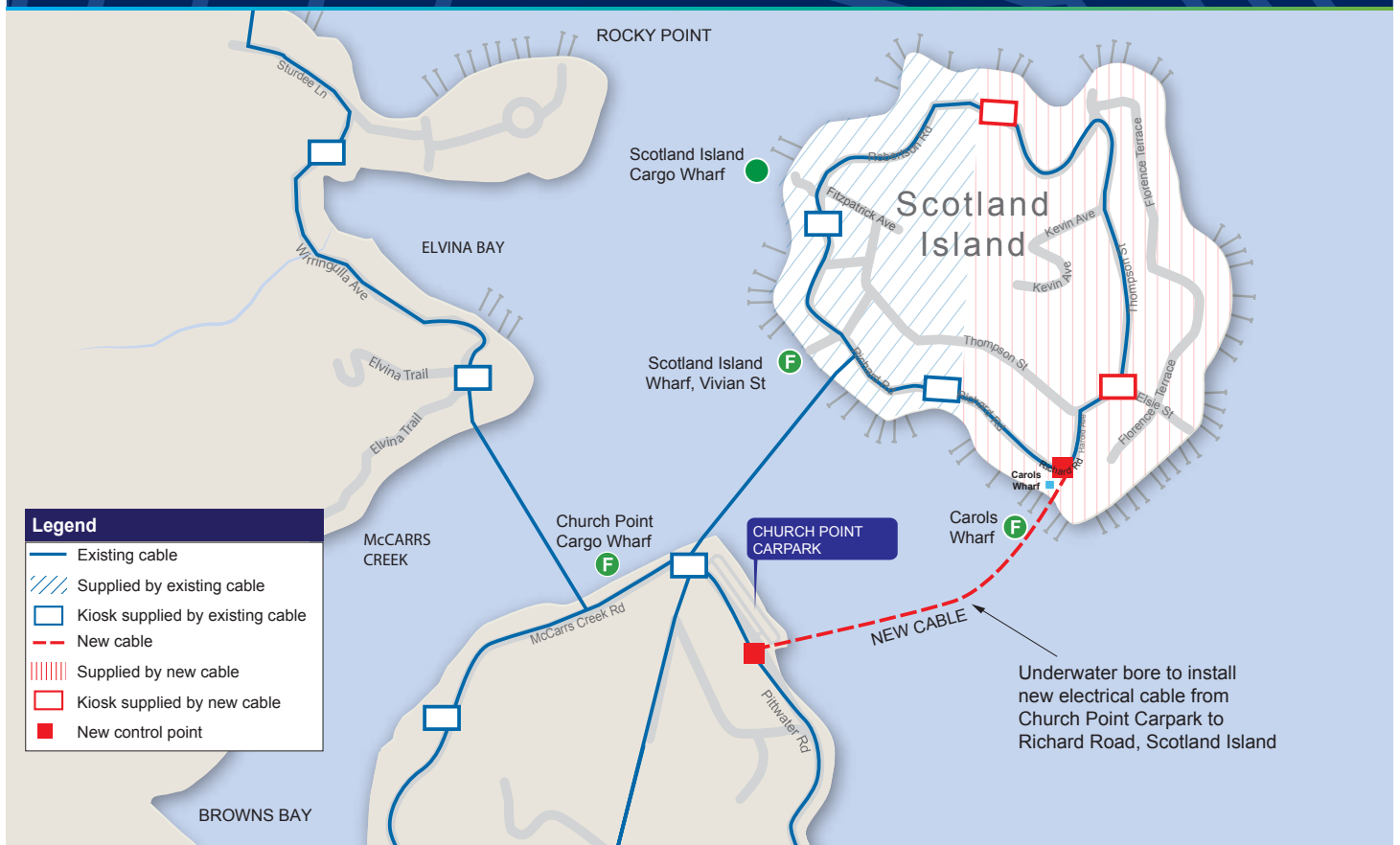


Scotland Island Energy Reliability Project



Project update

As you may be aware, construction was delayed in August 2019 due to the availability of a key piece of machinery. Construction is now due to start in **February 2020**.

As part of this work, our contractor, Dunstans, will be installing a backup electricity cable to Scotland Island to improve the reliability of the local power supply.

The new cable will be housed in a conduit (plastic pipe) by horizontally directionally drilling (HDD) a bore under the waterway between Church Point Carpark and Richard Road on Scotland Island.

A switching system will also be installed so that we can isolate faults in the overhead network, as required. This will mean we are able to limit power outages to a smaller number of properties in the event of an outage, at the same time as resolving the problem. In addition, space will be provided for future electricity cables and fiber, which can be used for future services.

Project timing

Construction is due to start in **February 2020** and is expected to take up to five months to complete, weather and ground conditions permitting.

We will notify residents again before we start work.

Community information sessions

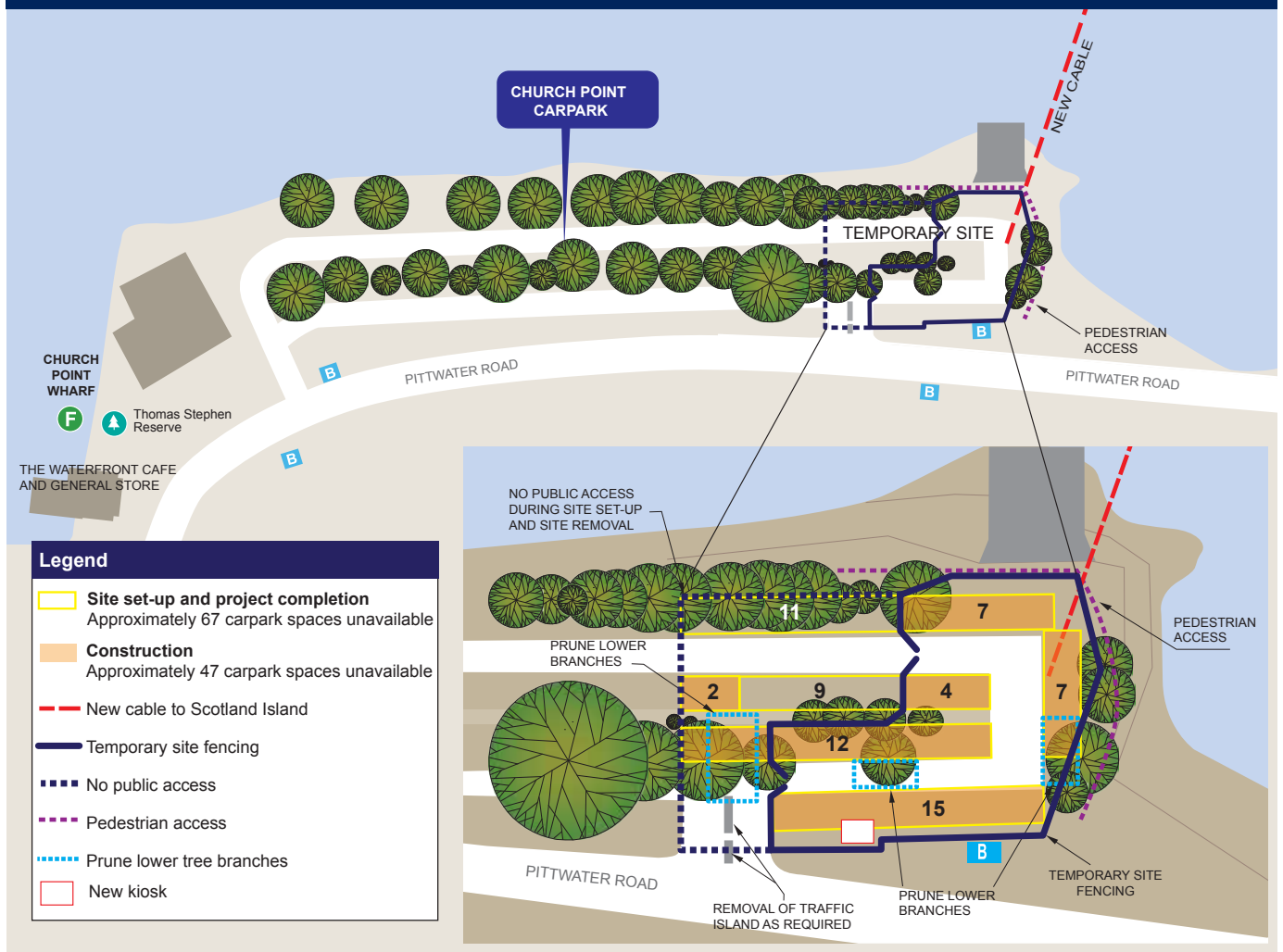
We are holding two information sessions so you can chat with the project team and discuss any concerns you may have. No appointment is necessary, just drop in.

Where: The Waterfront Café, 1860 Pittwater Road, Church Point

Dates: Wednesday 22 January 2020, between 5:30 - 7:30pm

Thursday 30 January 2020, between 5:30 - 7:30pm

Church Point Carpark



Temporary changes to Church Point Carpark and alternate parking arrangements

Dunstons will occupy a section at the southern end of the Church Point Carpark for the duration of construction. This will impact between 47 and 67 parking spaces at various stages (see diagram above). Signs will be placed in the carpark ahead of work starting to remind users of the changes.

During site setup, we will undertake activities to safely establish the site including:

- prune some low hanging branches
- remove two carpark lights, a traffic island and some cement wheel stops
- set up equipment on site.

This will take about one week to complete, weather and ground conditions permitting.

Following this, we will re-open about 20 parking spaces as indicated on the map above.

We recognise that our work will be disruptive and inconvenient to people that use the carpark. To minimise impacts, we have developed a plan with Northern Beaches Council (Council) to relocate up to 70 carpark spaces from Church Point Carpark to Rowland Reserve for the duration of the work. See details following.

Relocating to Rowland Reserve and cashback offer

If you are a resident with a Church Point Carpark permit, we are asking you to volunteer to park your car at Rowland Reserve while we do the work.

To thank you for volunteering, we will give you a \$350 Visa Prepaid Card as a cashback on your current permit plus extra financial support to travel between the carparks.

This offer is available on a first come, first served basis, and will be limited to 70 Visa Prepaid Cards only.

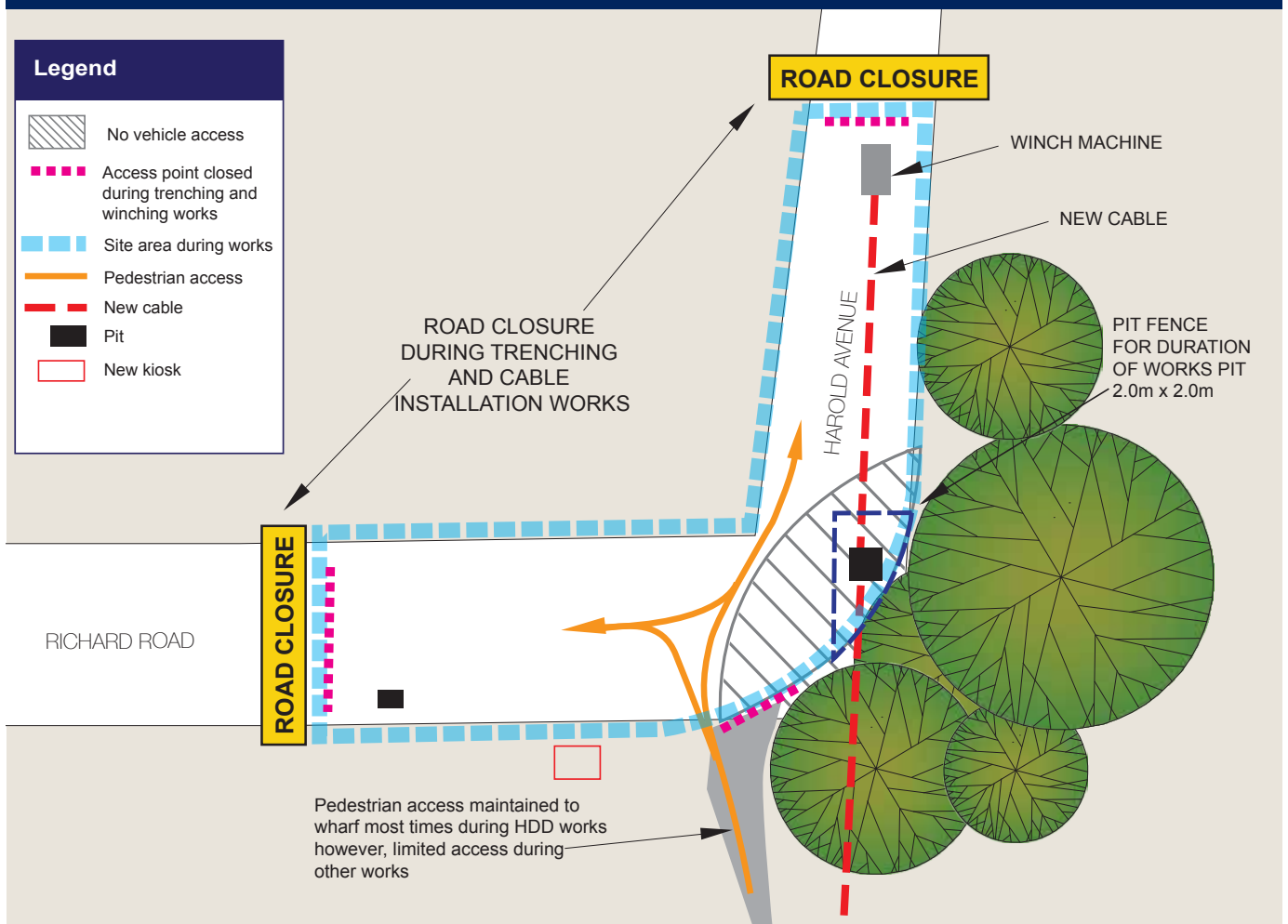
How to get involved

You will need to:

1. Take your existing Church Point Carpark permit to Council's Customer Service Centre at Mona Vale*
2. Fill in and submit a special Rowland Reserve Carpark permit application form between **Monday 13 January** and **Wednesday 4 March 2020**. There will be no charge for this permit.
3. Make sure on the application that you elect to have Council send your form to Ausgrid.

*The Mona Vale Customer Service Centre is open Monday to Friday 8:30am to 5pm. It will also be open additional hours on **Saturday 1 February 2020** between 9am-12pm, to assist residents who are unable to visit during the week.

Richard Road, Scotland Island



Council will then forward your details to us and we can either:

- Send you a \$350 Visa Prepaid Card by registered post.
- Have a \$350 Visa Prepaid Card ready for you at one of our community information sessions (see details on front page) – please let us know in advance if you intend to collect it at a session (see contact details on back page).

As an additional thank you, we would like to offer volunteers additional assistance with travel between the carparks.

Apply for your Rowland Reserve permit:

- **by 5pm on Monday 3 February 2020 to receive an extra \$300 on your Visa Prepaid Card**
- **between Tuesday 4 February and 5pm on Wednesday 4 March 2020 to receive an extra \$200 on your Visa Prepaid Card.**

At the end of construction

When construction finishes, volunteers will need to visit Council's Mona Vale Customer Service Centre office to collect a new Church Point Carpark sticker. There will be no charge for your replacement permit.

Storage options at Church Point

Council will install 20 refundable gold coin operated temporary lockers at Church Point, giving residents extra storage space options during construction. These will be available from mid-February 2020.

Access to Richard Road, Carols Wharf and Harold Reserve

The corner of Richard Road and Harold Avenue will be the exit point for the HDD bore. This part of the road will be closed to vehicles for up to four months.

As confirmed previously, we will maintain pedestrian access to Richard Road most of the time and to the wharf and reserve from the road. However, there will be times when access will be restricted during work hours. We will notify the community in advance of any access changes.

Access to the wharf from the water will be maintained at all times and ferry, water taxi and boat activities will not be affected.



What to expect during construction

As previously shared with you, the HDD bore will extend from the eastern end of Church Point Carpark to Richard Road, Scotland Island. The bore will start from the carpark and exit in Richard Road, next to Carols Wharf.

There will be some noisy work, including saw cutting and rock breaking at the start of the work, but we will minimise this as much as we can. Once the bore starts, you may notice a humming noise.

Once the bore is complete, we will be doing some trenching work at and around the entry and exit points in the Church Point Carpark and Richard Road to connect the new cables to the existing electricity network.

To enable us to isolate faults in the overhead network during any further outages, we will install two new electrical kiosks in the garden bed in the Church Point Carpark and one in the grass verge outside 1 Richard Road. The dimensions of the kiosks will be about 1.9m (L) x 1.2m (W) X 1.6m (H).

Work hours

Work hours are from 7am to 6pm Mondays to Fridays and 8am to 1pm on Saturdays. From time to time, we may need to work outside these hours. We will notify affected residents before any out of hours work begins.

Your power supply

There will be at least one planned interruption on Scotland Island at the end of construction, to allow us to connect the new cable to the existing electricity network. We will notify affected residents in advance of this.

Register for email updates

As letterbox drops can be difficult for offshore properties, we are encouraging residents and community members to sign up for email updates throughout construction. Send your email and property address to majorprojects@ausgrid.com.au to register.

Updates will also be available on the website at: ausgrid.com.au/scotlandisland

Contacting us

For more details please contact the community engagement team:

Call 1800 604 765

Email majorprojects@ausgrid.com.au

Visit ausgrid.com.au/scotlandisland



Interpreter service 131 450

