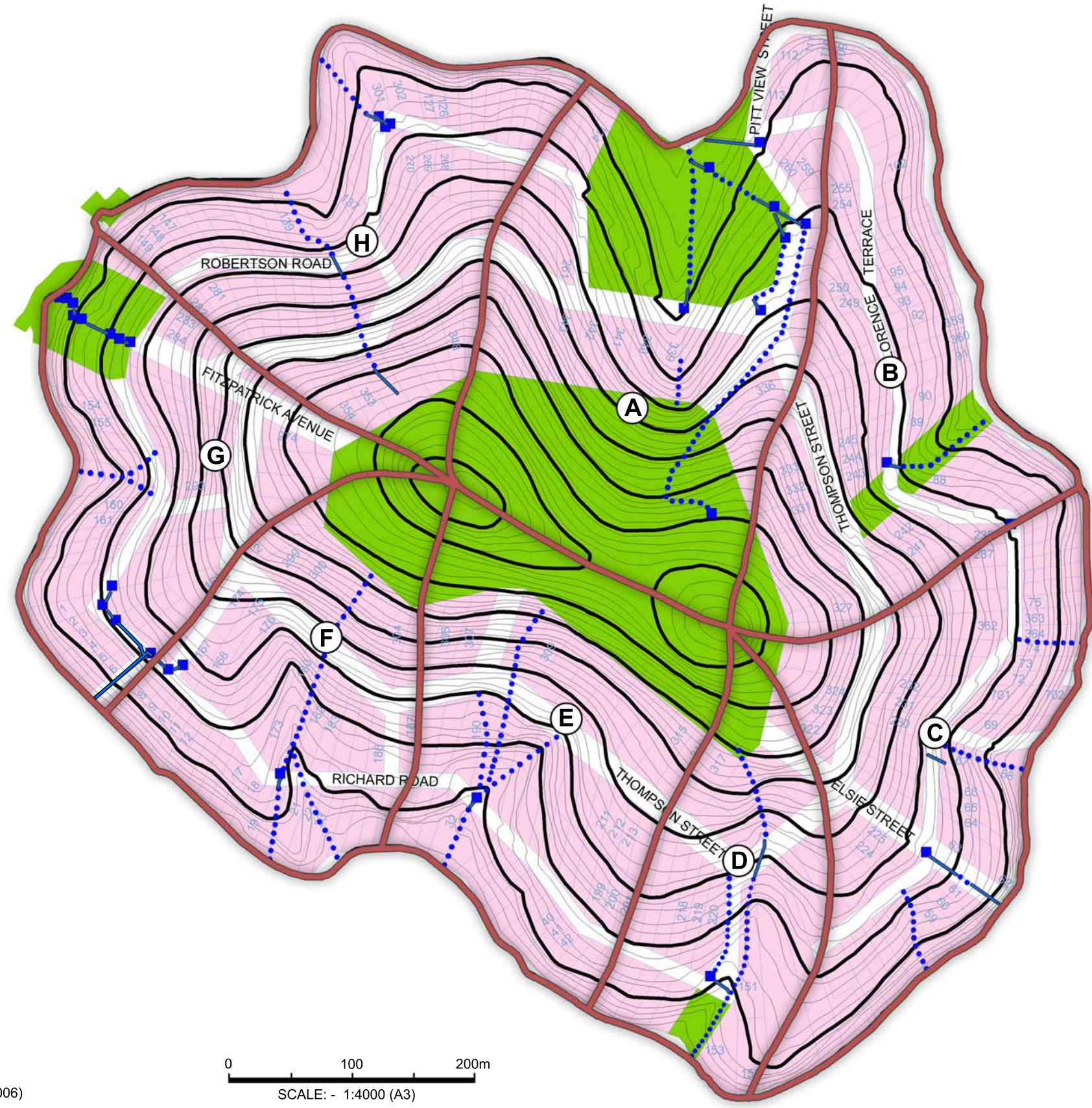


FIGURE 1



- LEGEND:
- (A)** Catchment name
  - Catchment boundary
  - Land use zoning
  - Existing lot No.
  - Major contour
  - Minor contour (2m contour interval)
  - Existing drainage pit
  - Existing drainage pipe
  - Existing watercourse/ overland flow path

0 100 200m  
SCALE: - 1:4000 (A3)

DATA SOURCE: Pittwater Council MapInfo Data (Dated 8/8/2006)

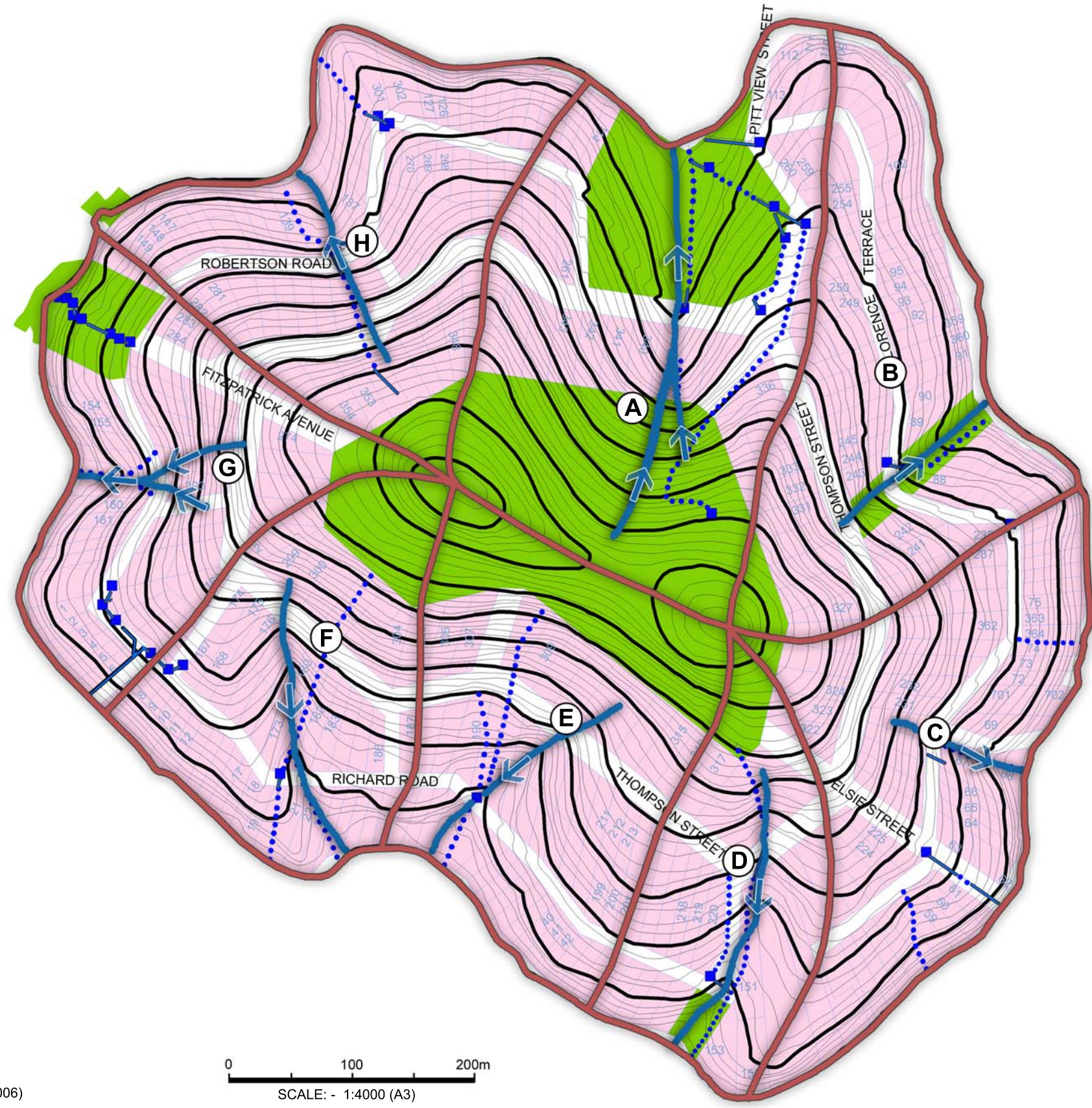


J6617/FIG1\_TopoCatchments.jpg  
Date: 13/8/2008

**SCOTLAND ISLAND STORMWATER  
MANAGEMENT STRATEGY -  
TOPOGRAPHICAL CATCHMENTS**



FIGURE 2



- LEGEND:
- A Catchment name
  - Catchment boundary
  - Land use zoning
  - 79 Existing lot No.
  - Major contour
  - Minor contour (2m contour interval)
  - Existing drainage pit
  - Existing drainage pipe
  - ⋯ Existing watercourse/ overland flow path
  - ➔ Major topographical watercourse / overland flow path

DATA SOURCE: Pittwater Council MapInfo Data (Dated 8/8/2006)

0 100 200m  
SCALE: - 1:4000 (A3)





DATA SOURCE: Pittwater Council scotlandisland.dwg(Dated 16/8/2006)

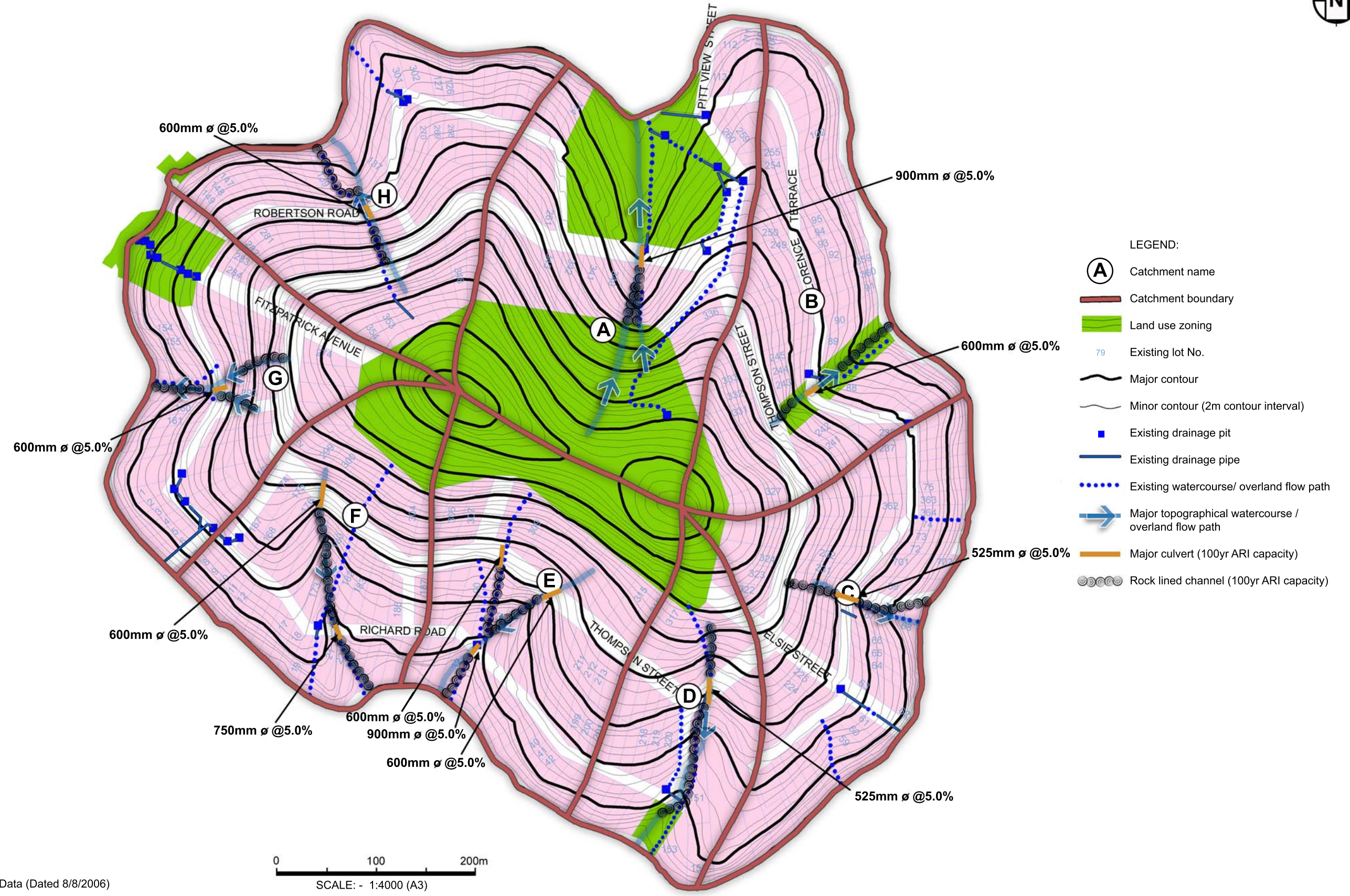


J6617/FIG3\_ExistingDrainageStructures.jpg  
Date: 8/8/2008

**SCOTLAND ISLAND STORMWATER  
MANAGEMENT STRATEGY-  
EXISTING DRAINAGE STRUCTURES**



FIGURE 4



DATA SOURCE: Pittwater Council MapInfo Data (Dated 8/8/2006)

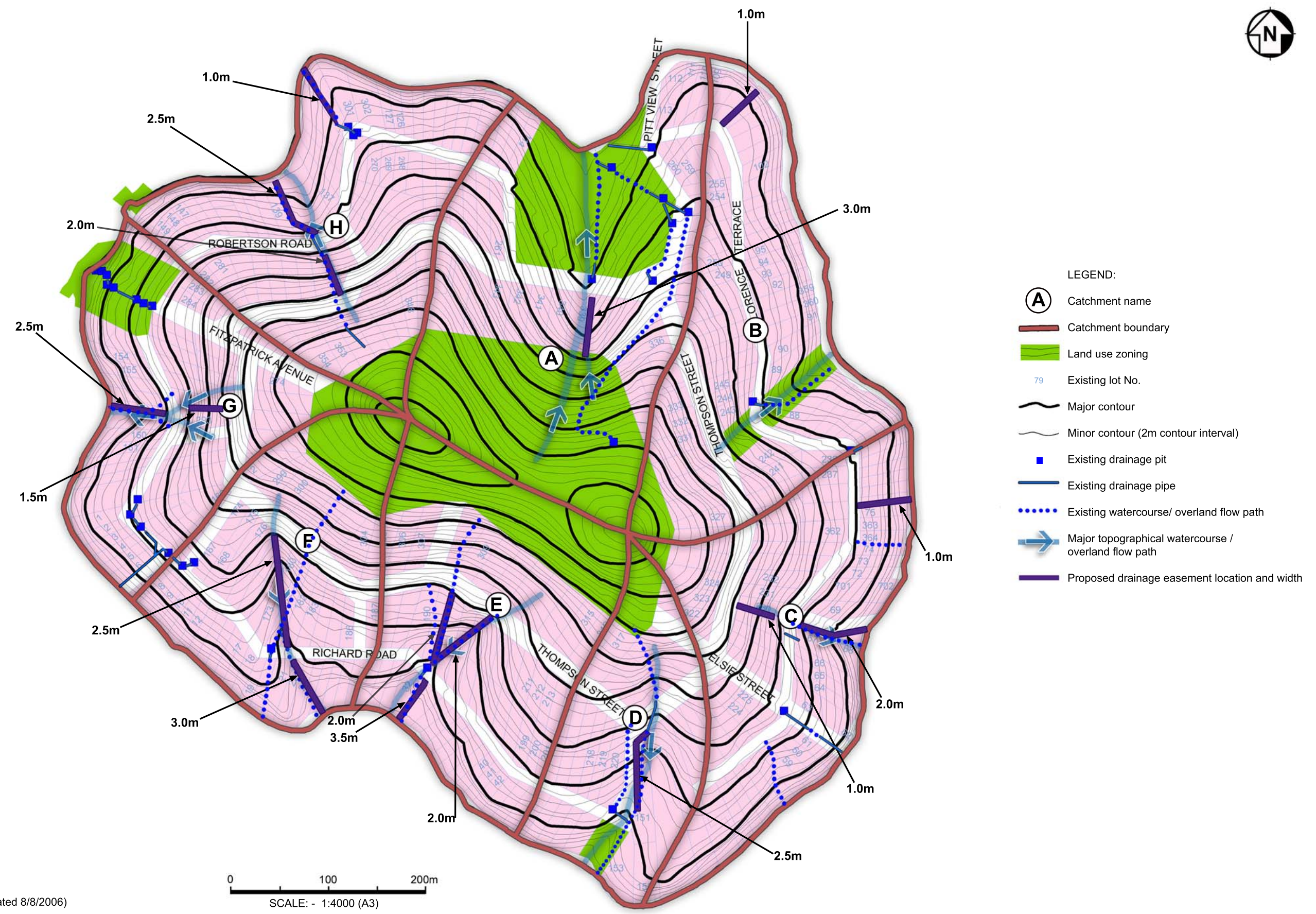


J6617/FIG4\_ManagementStrategyProposedDrainageSystem.jpg  
Date: 13/8/2008

**SCOTLAND ISLAND STORMWATER  
MANAGEMENT STRATEGY -  
PROPOSED DRAINAGE SYSTEM IMPROVEMENTS**



FIGURE 5



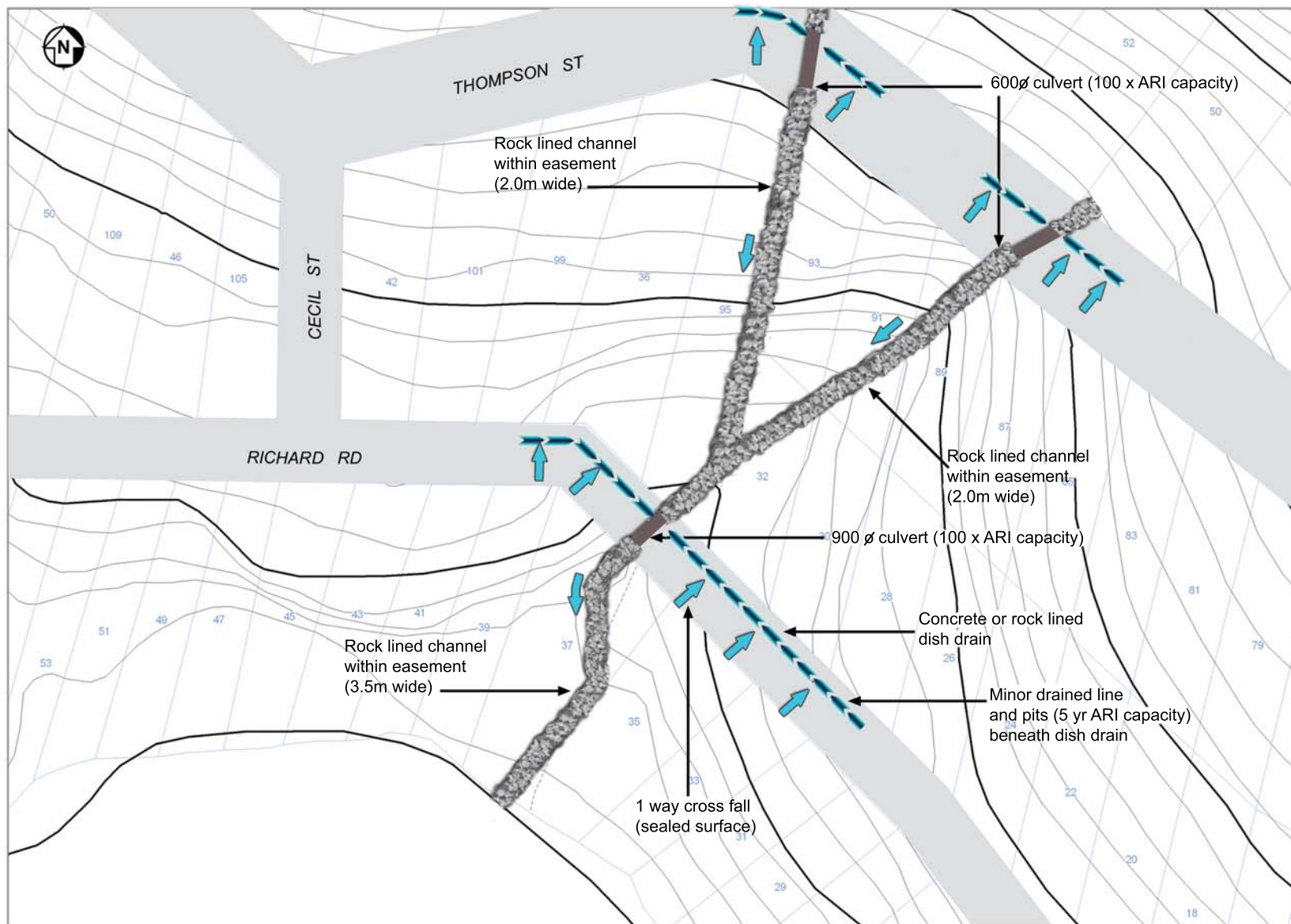
DATA SOURCE: Pittwater Council MapInfo Data (Dated 8/8/2006)



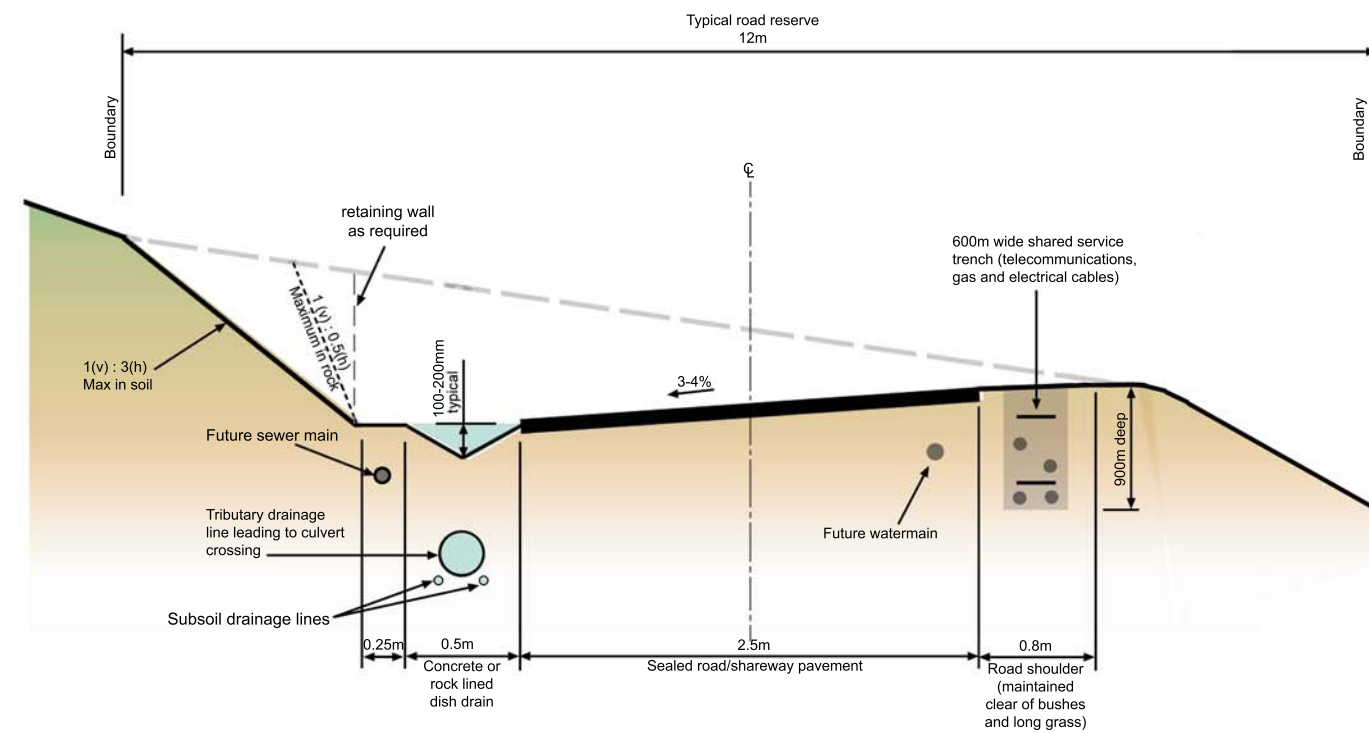
J6617/FIG5\_ManagementStrategyProposedDrainageEase.jpg  
Date: 13/8/2008

**SCOTLAND ISLAND STORMWATER  
MANAGEMENT STRATEGY -  
PROPOSED DRAINAGE EASEMENT LOCATIONS**





PLAN OF TYPICAL INTERSECTION DRAINAGE LAYOUT



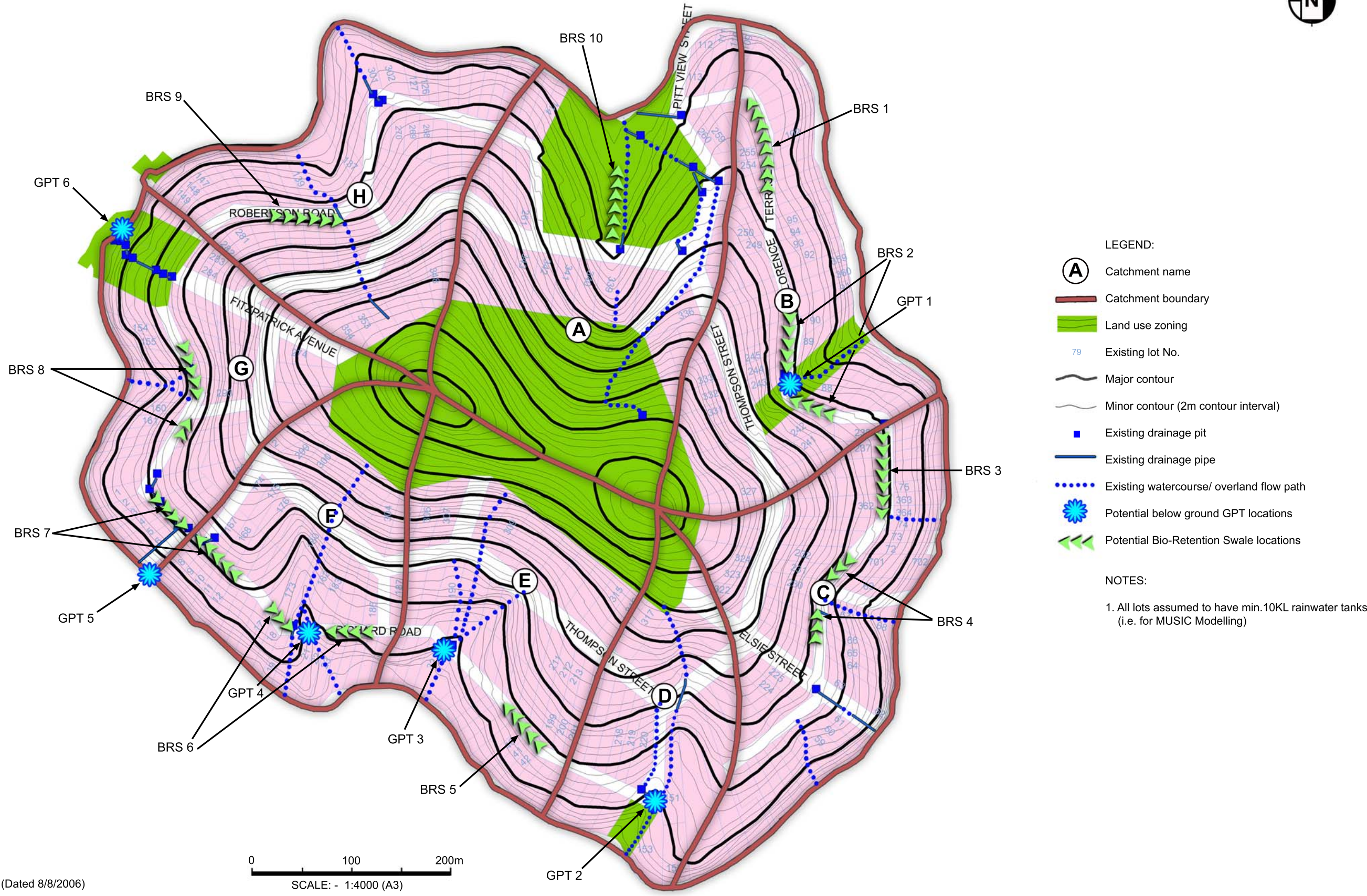
TYPICAL ROAD / SHAREWAY CROSS SECTION  
(Not to scale)

NOTES:

1. Passing bays shall be provided generally at intervals of 200m but not exceeding 400m. The total trafficable width at passing bays shall not be less than 7m.
2. The maximum longitudinal gradient of unsealed roads shall be 16%.  
The maximum longitudinal gradient of all roads shall be 25%.



FIGURE 7



DATA SOURCE: Pittwater Council MapInfo Data (Dated 8/8/2006)

0 100 200m  
SCALE: - 1:4000 (A3)

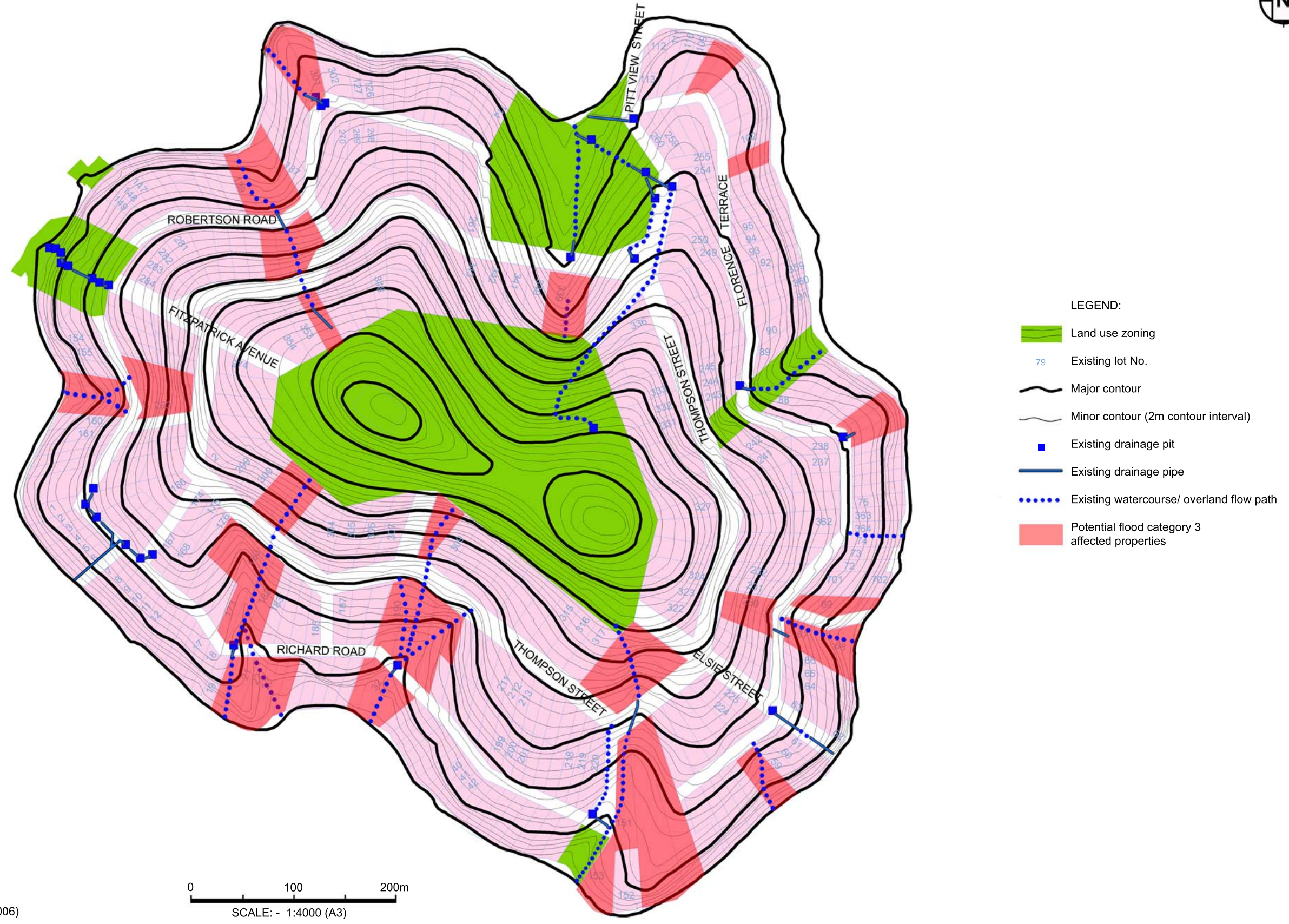


J6617/FIG7\_ProposedStormwaterTreatment.jpg  
Date: 13/8/2008

**SCOTLAND ISLAND STORMWATER  
MANAGEMENT STRATEGY -  
PROPOSED STORMWATER TREATMENT MEASURES**



FIGURE 8



DATA SOURCE: Pittwater Council MapInfo Data (Dated 8/8/2006)



**SCOTLAND ISLAND STORMWATER MANAGEMENT STRATEGY-  
POTENTIAL FLOOD CATEGORY 3 AFFECTED PROPERTIES**

J6617/FIG8\_PotentialFlood.jpg  
Date: 13/8/2008