



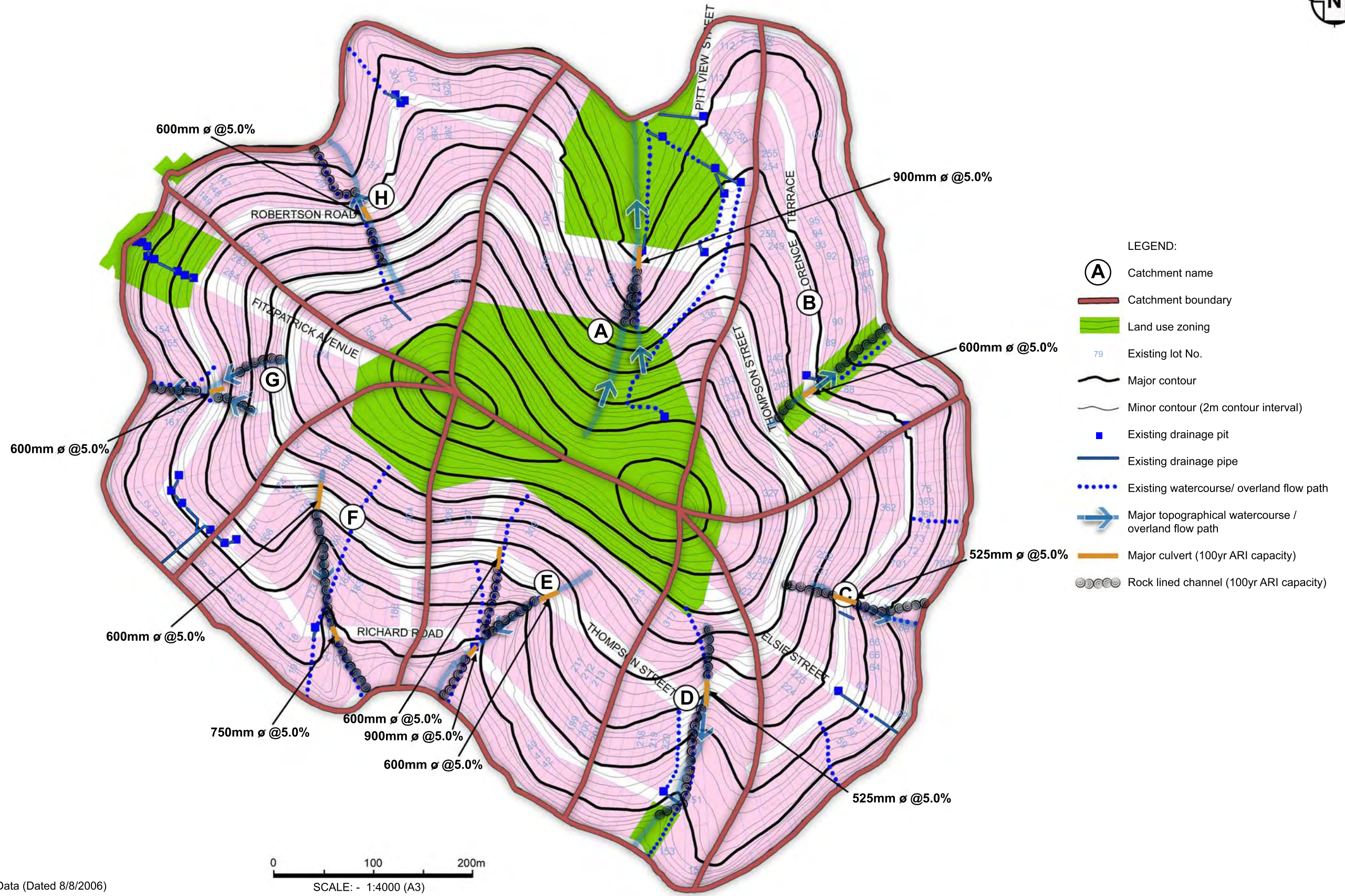
DATA SOURCE: Pittwater Council scotlandisland.dwg(Dated 16/8/2006)



01852/FIGS3_ExistingDrainageStructures.jpg
Date: 2/7/2010

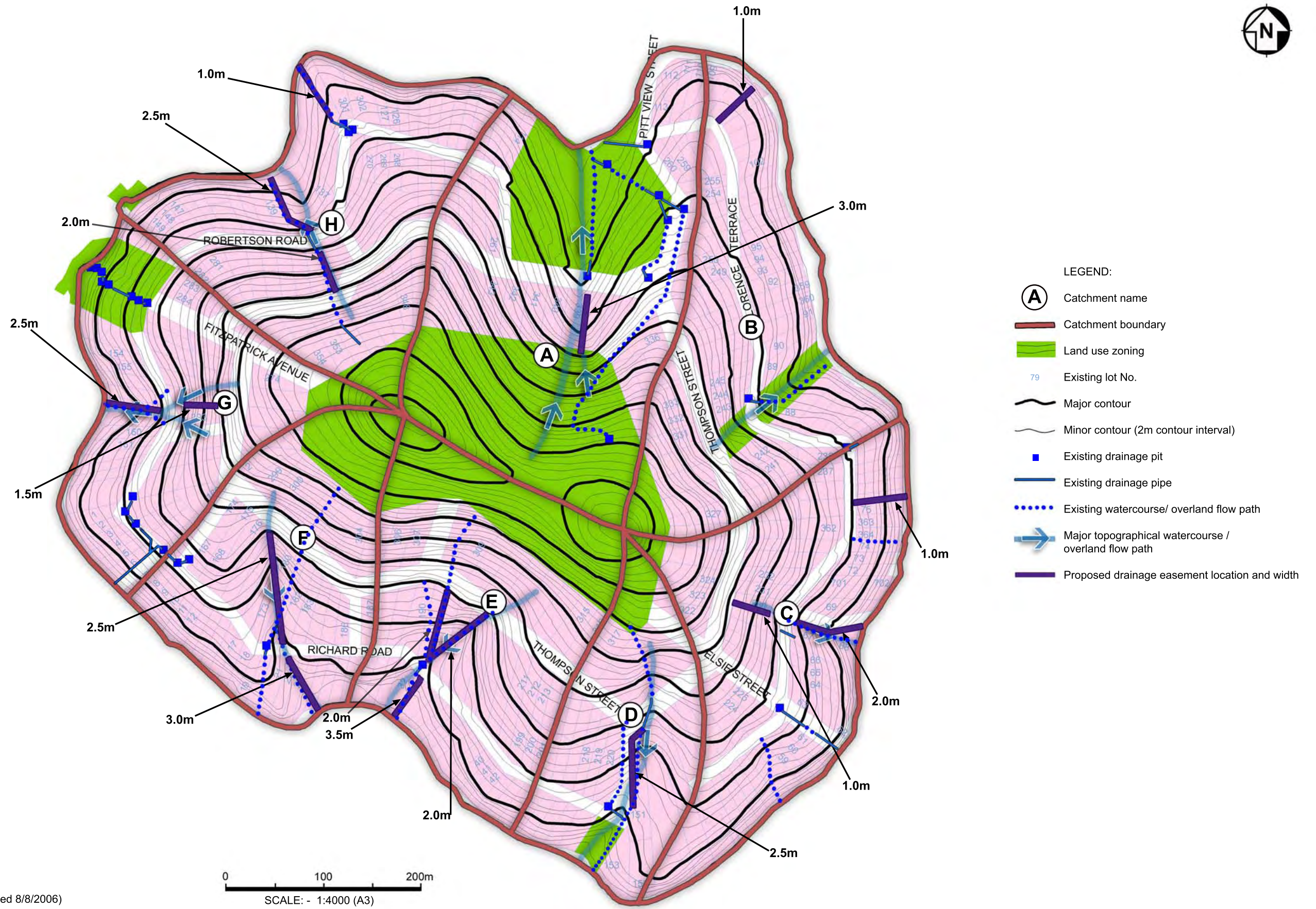
0 100 200m
SCALE: - 1:4000 (A3)

**SCOTLAND ISLAND STORMWATER
MANAGEMENT STRATEGY-
EXISTING DRAINAGE STRUCTURES**

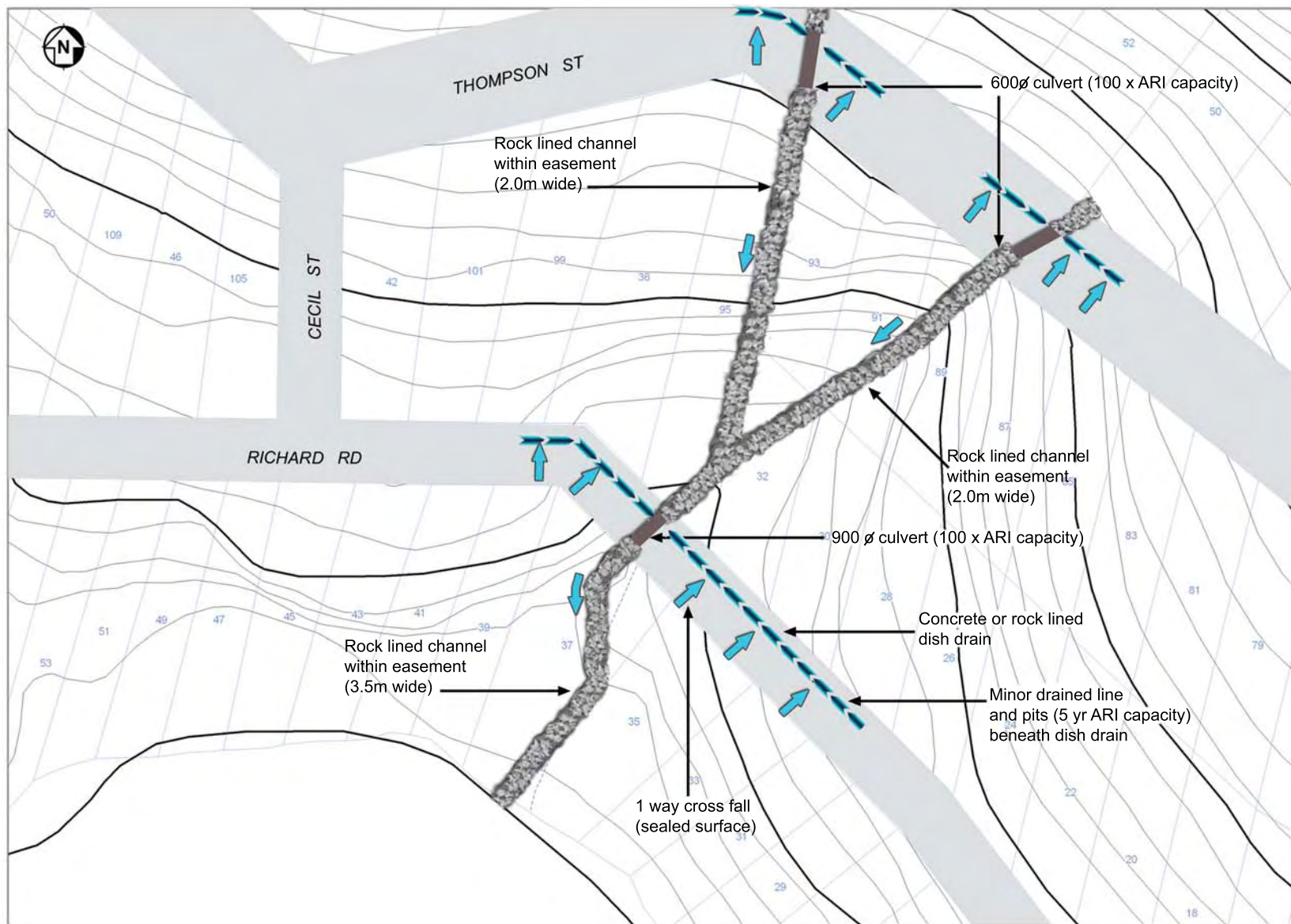


DATA SOURCE: Pittwater Council MapInfo Data (Dated 8/8/2006)

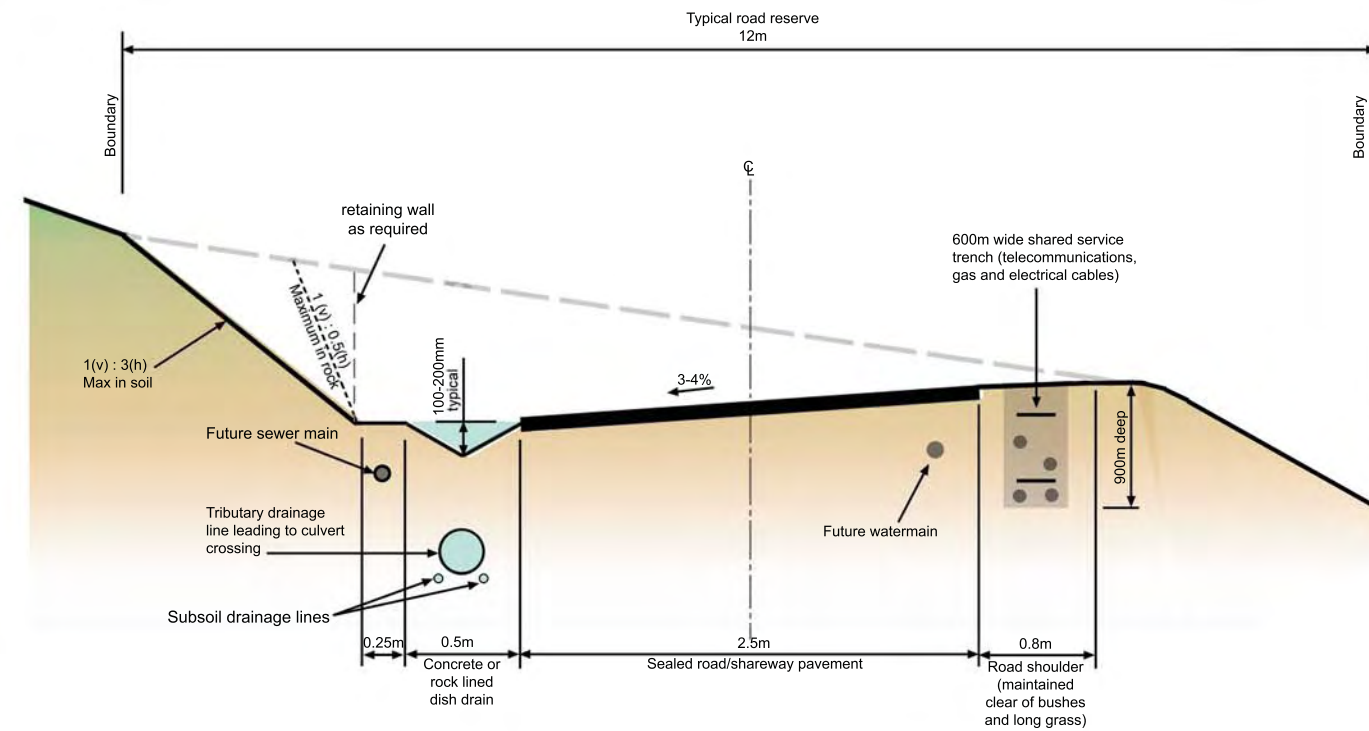
FIGURE S5



DATA SOURCE: Pittwater Council MapInfo Data (Dated 8/8/2006)



PLAN OF TYPICAL INTERSECTION DRAINAGE LAYOUT

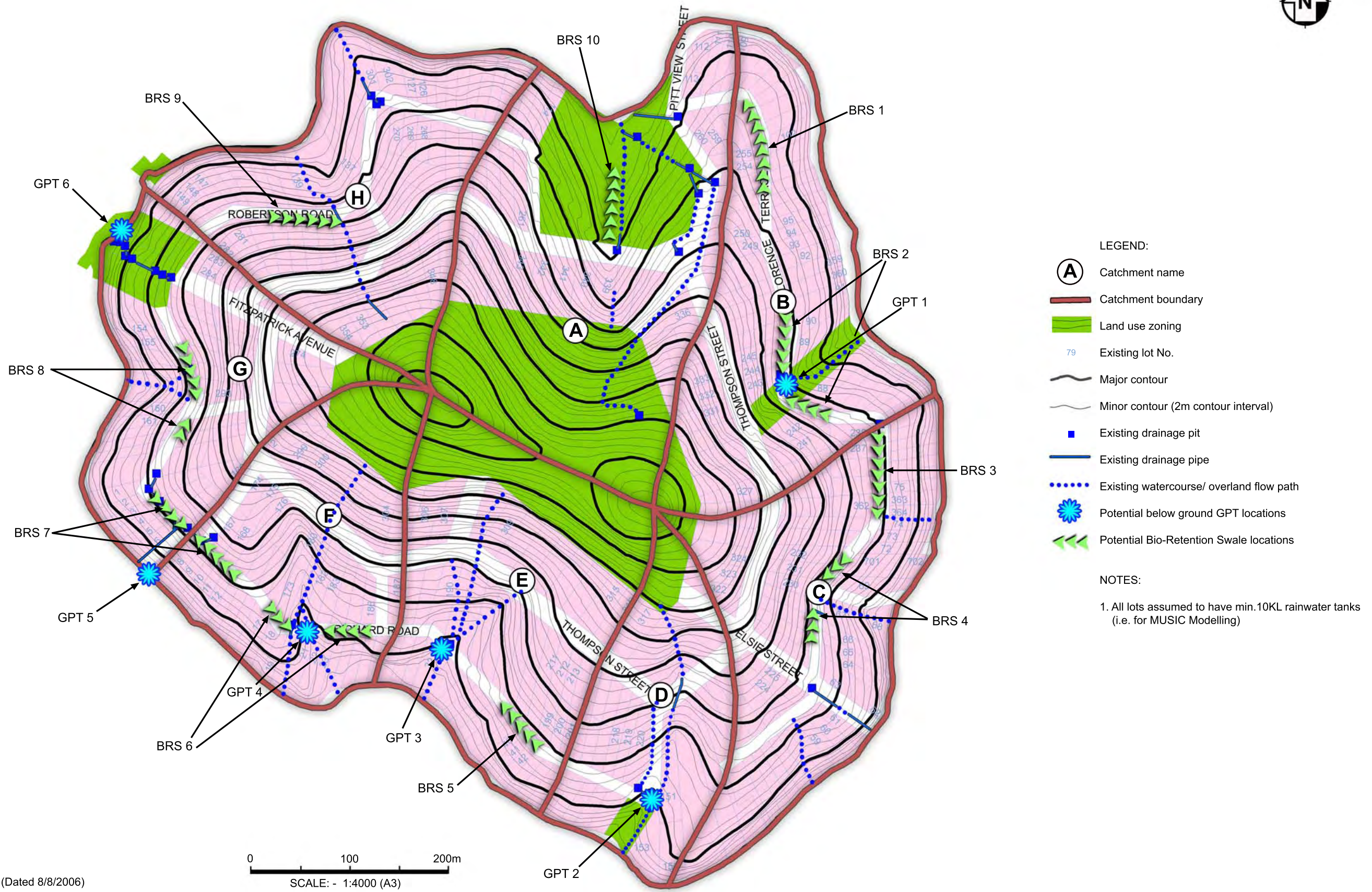


TYPICAL ROAD / SHAREWAY CROSS SECTION
(Not to scale)

NOTES:

1. Passing bays shall be provided generally at intervals of 200m but not exceeding 400m. The total trafficable width at passing bays shall not be less than 7m.
2. The maximum longitudinal gradient of unsealed roads shall be 16%.
The maximum longitudinal gradient of all roads shall be 25%.

FIGURE S7



DATA SOURCE: Pittwater Council MapInfo Data (Dated 8/8/2006)